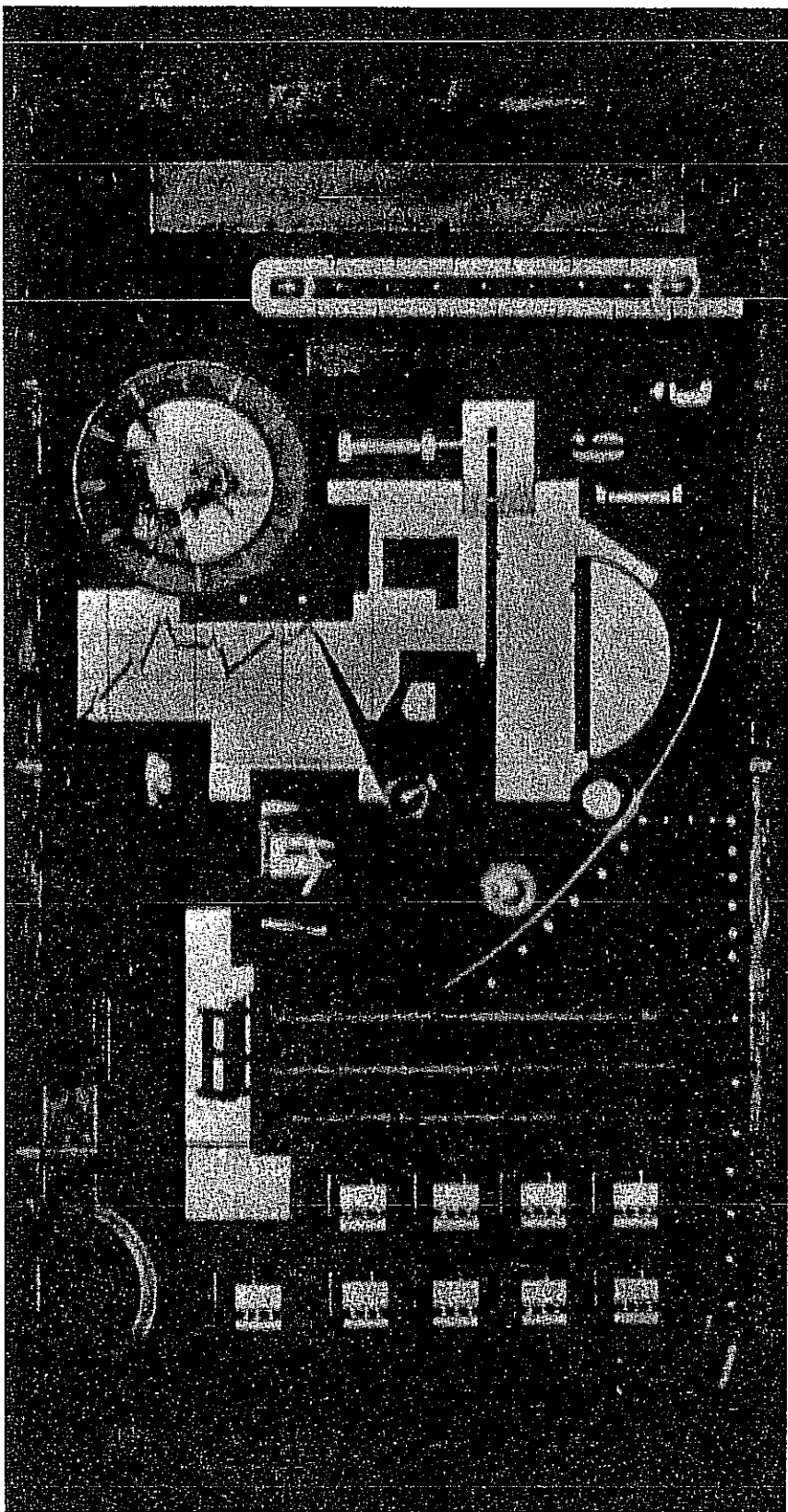
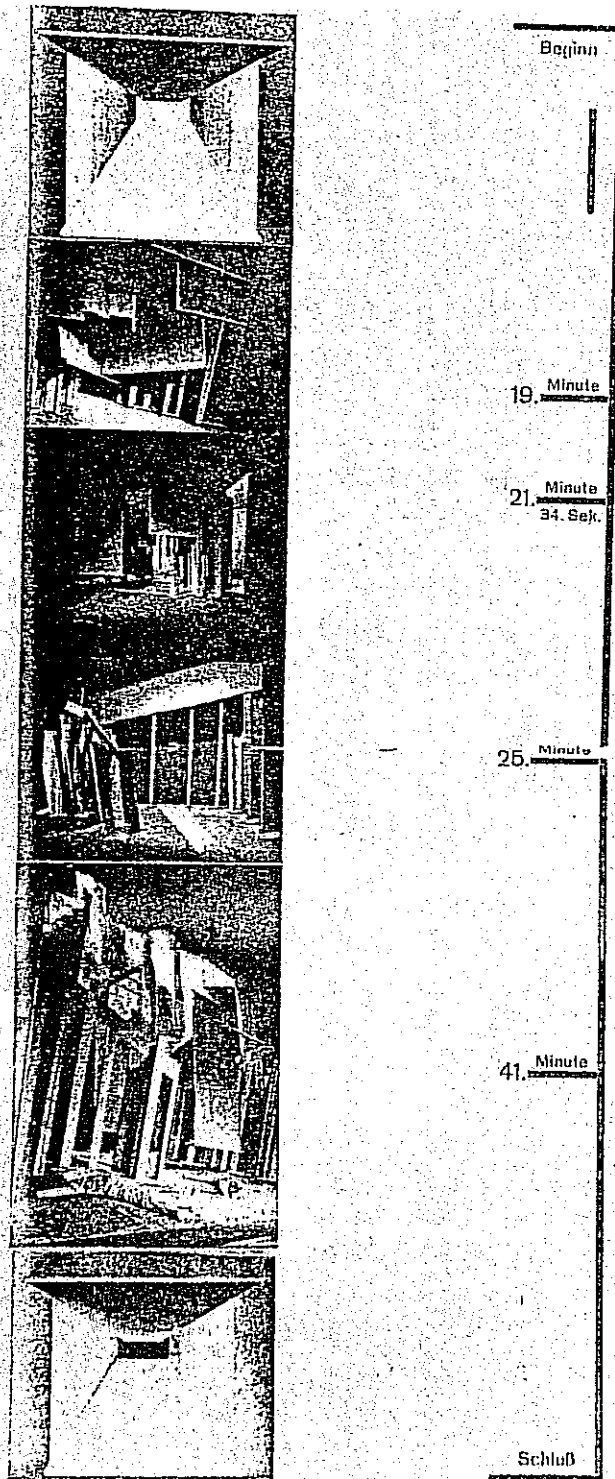


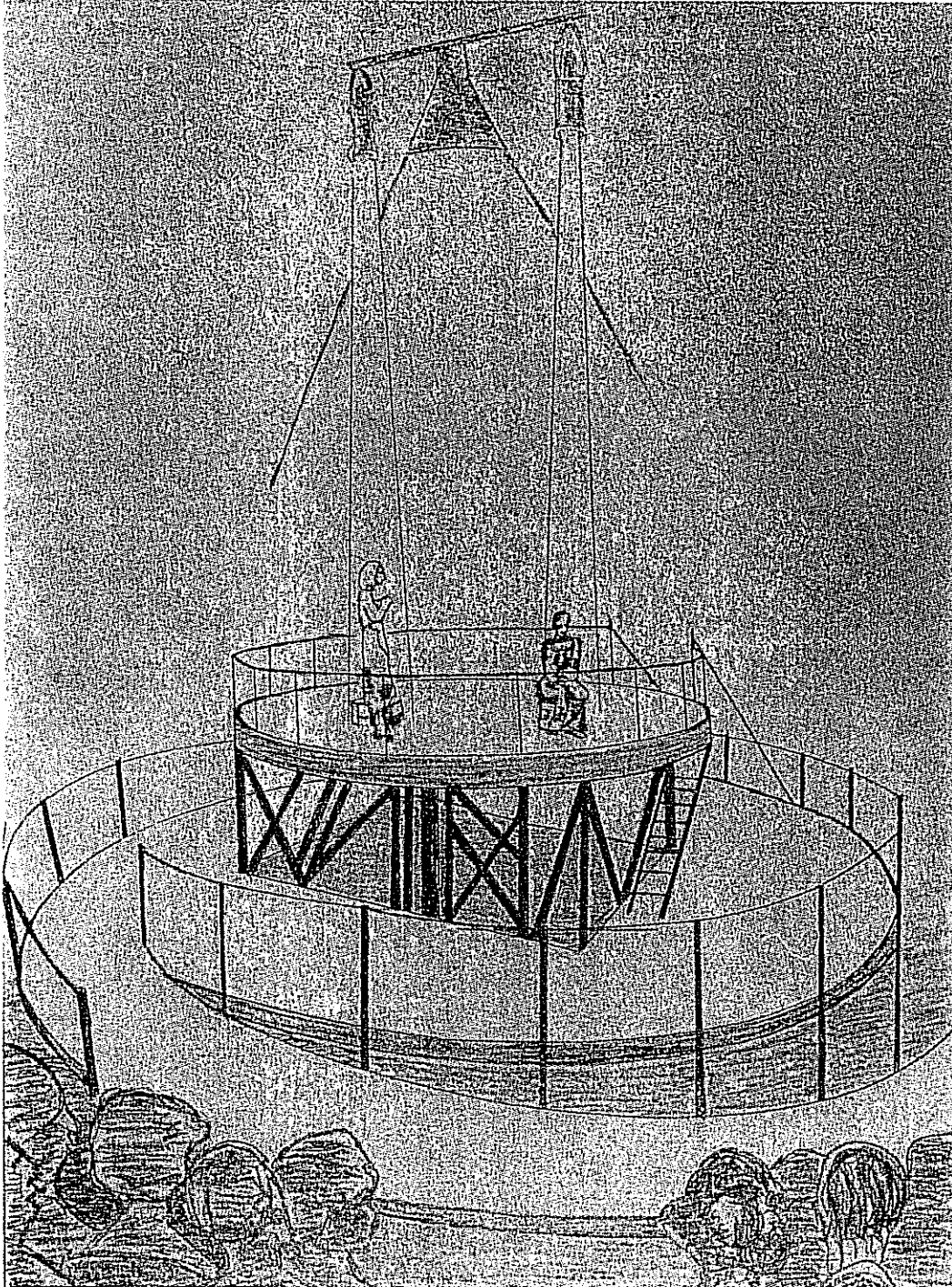
1. R.U.R.: Front View, Kiesler Papers.



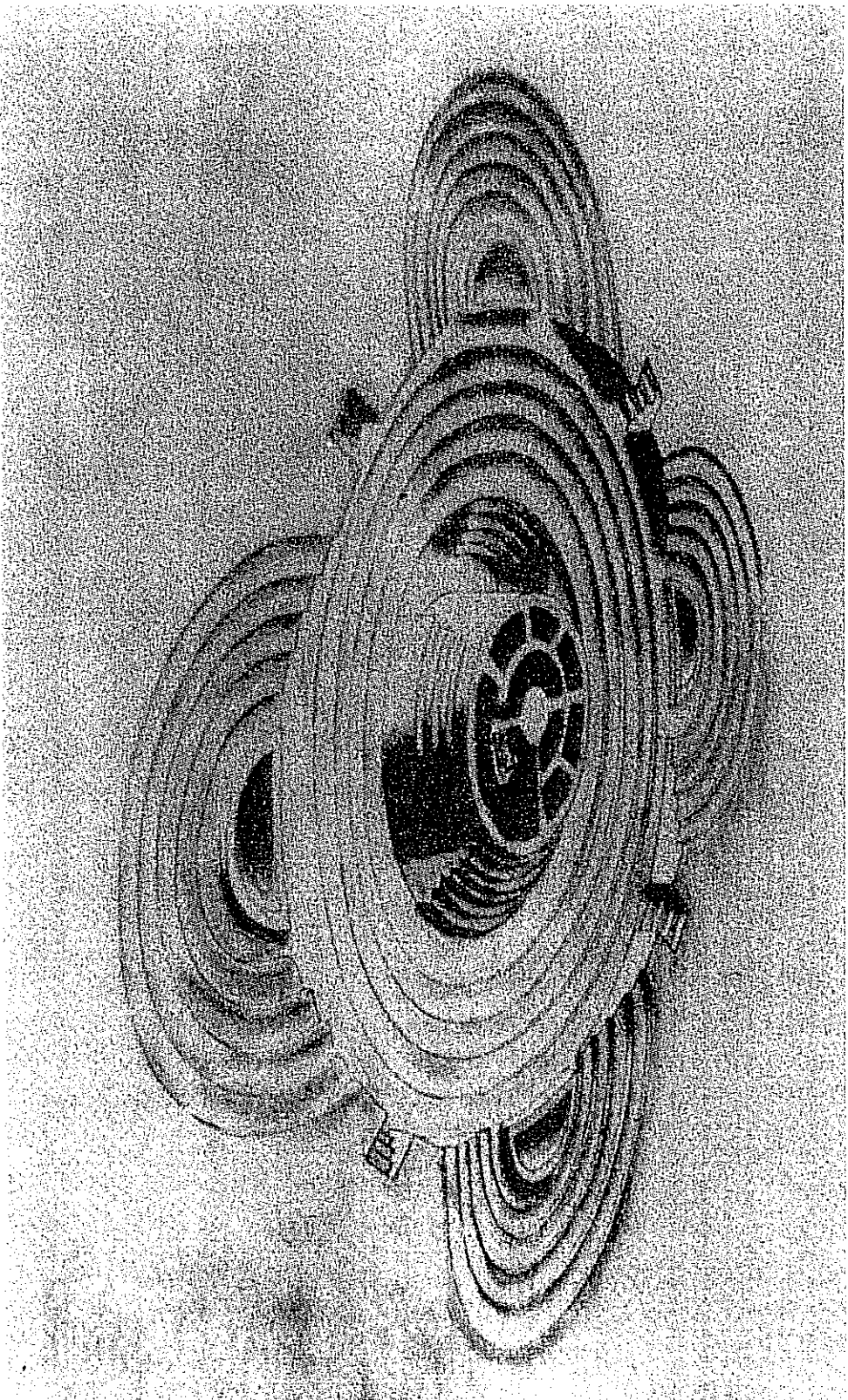
2. *Emperor Jones*: Sequence of the movement of the setting against a time scale. Kiesler Papers.



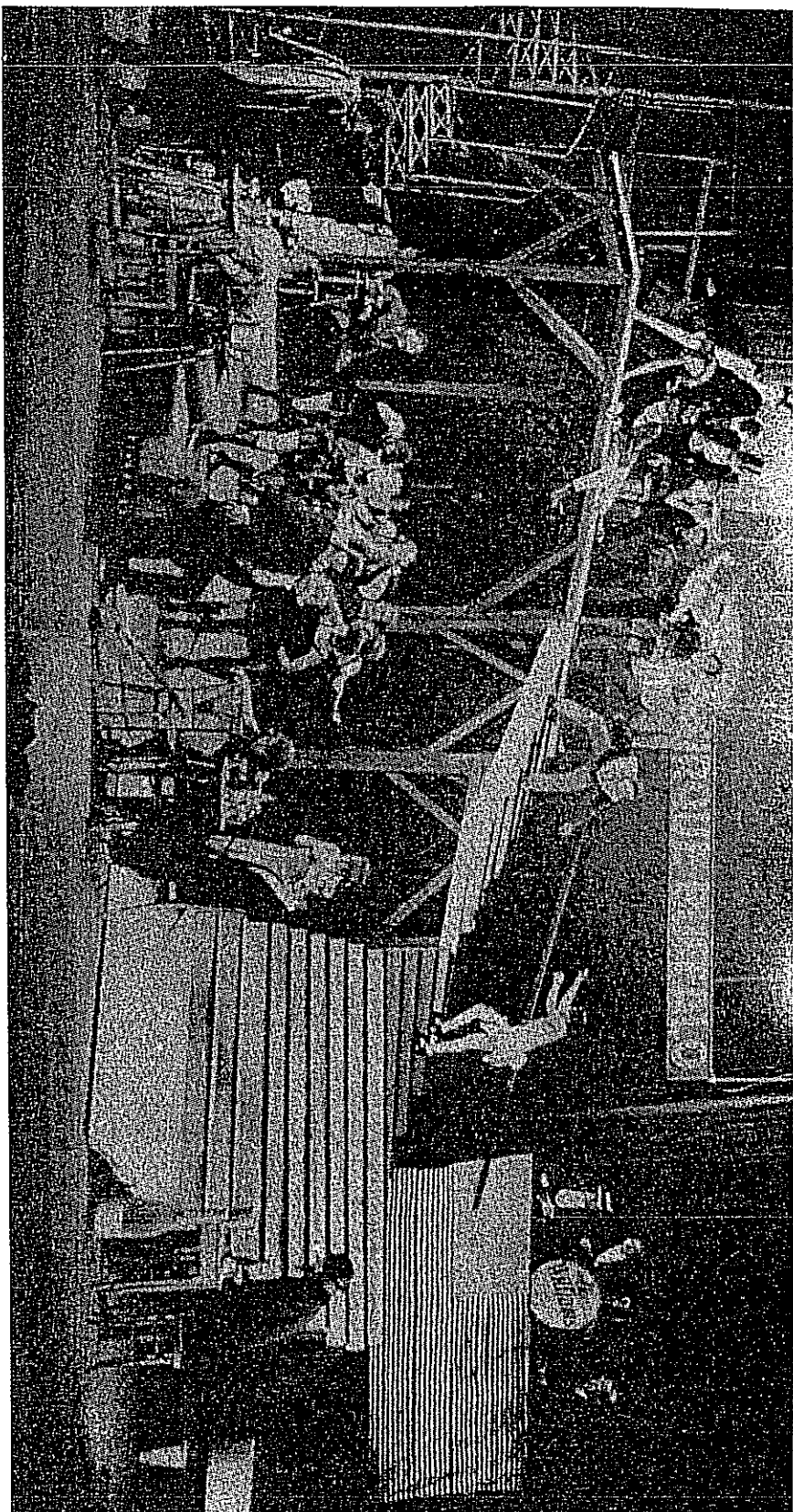
3. The Space Stage, Vienna, 1924: Drawing *Der Tag* (Vienna), Oct. 4, 1924. Redrawn by R. L. Held.



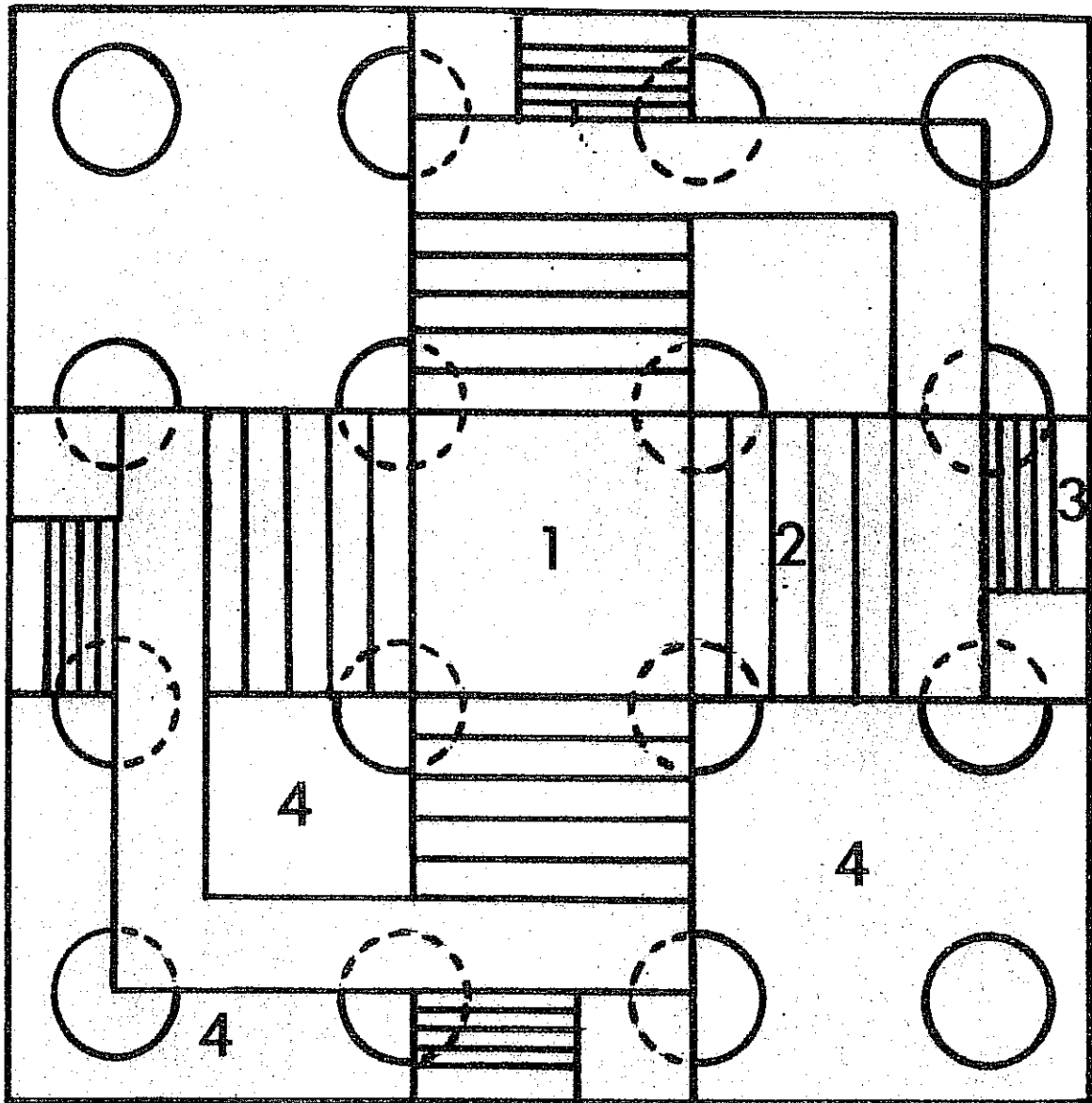
4. The Stegreiftheater. Jacob L. Moreno, *The Theatre of Spontaneity* (N.Y.: Beacon House 1947 Frontispiece).



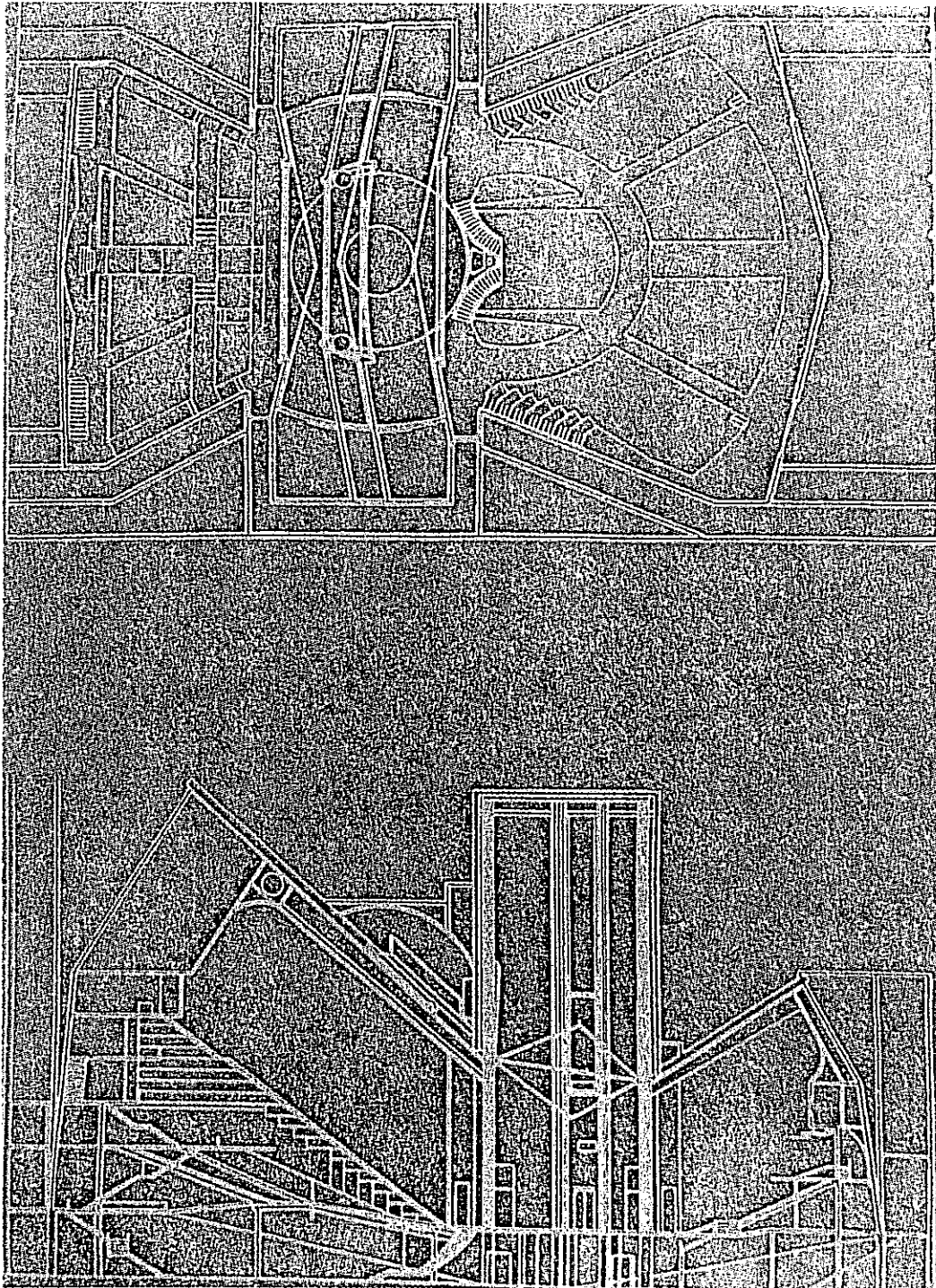
5. *Francesca*, Vienna, 1924, Kiesler Papers.



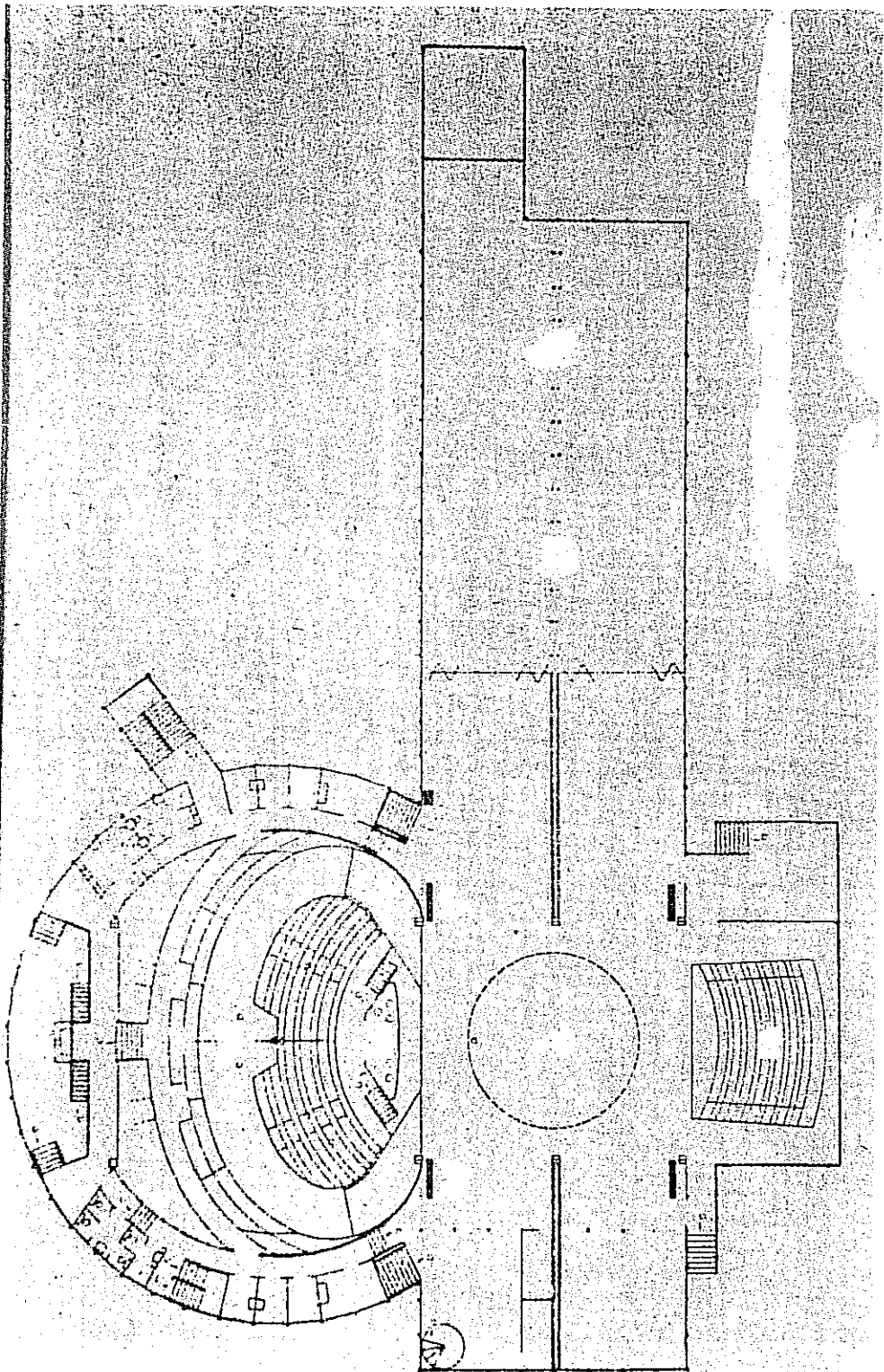
6. The Optophon Pavilion, Paris, 1925: (1) Stage; (2) Audience; (3) Entrance; (4) Open-Air Areas; circles indicate supporting columns. *The Little Review*, XI (Winter, 1926), cover. Reconstructed and drawn by R. L. Held.



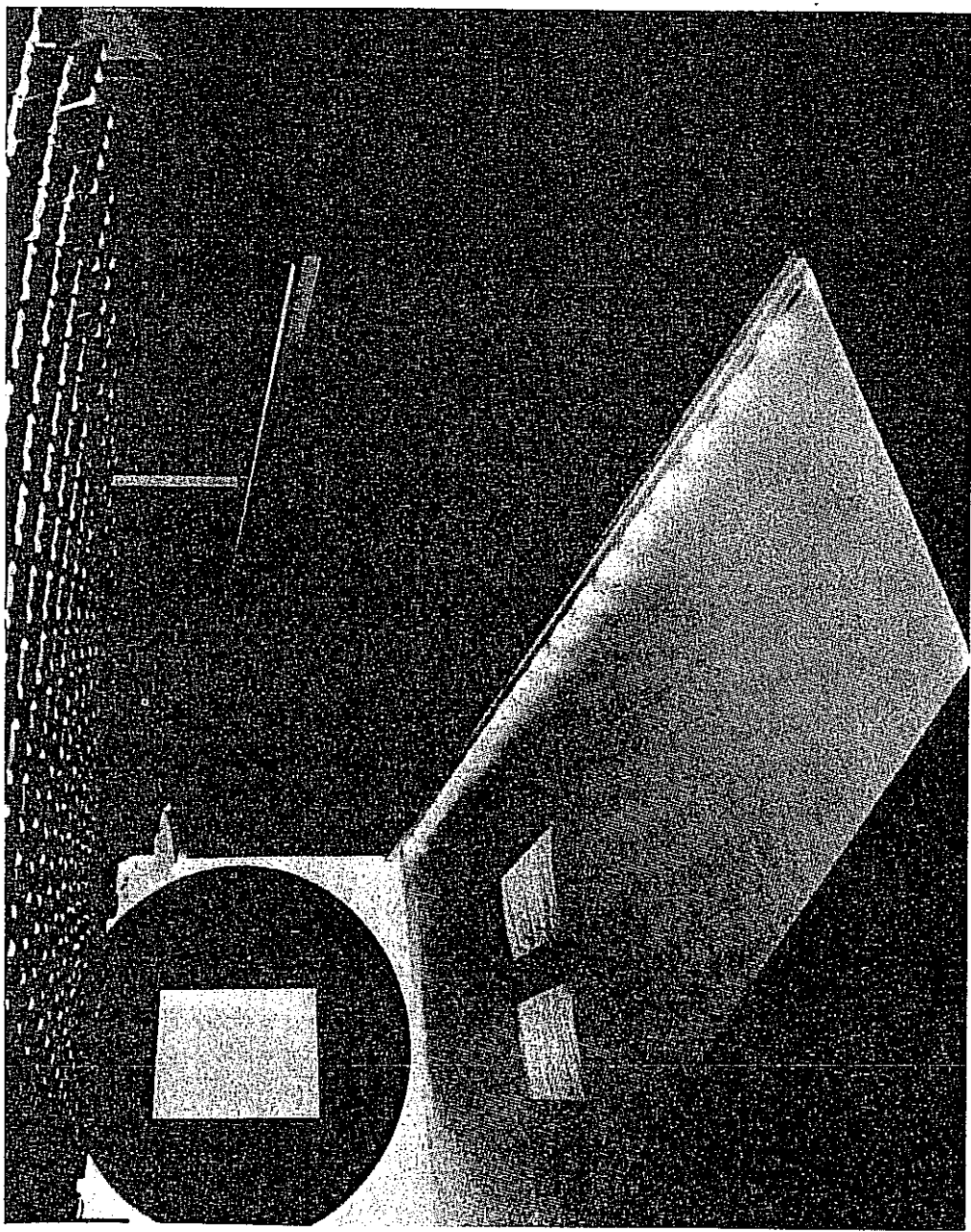
7. The Brooklyn Theatre, 1926. Kiesler Papers.



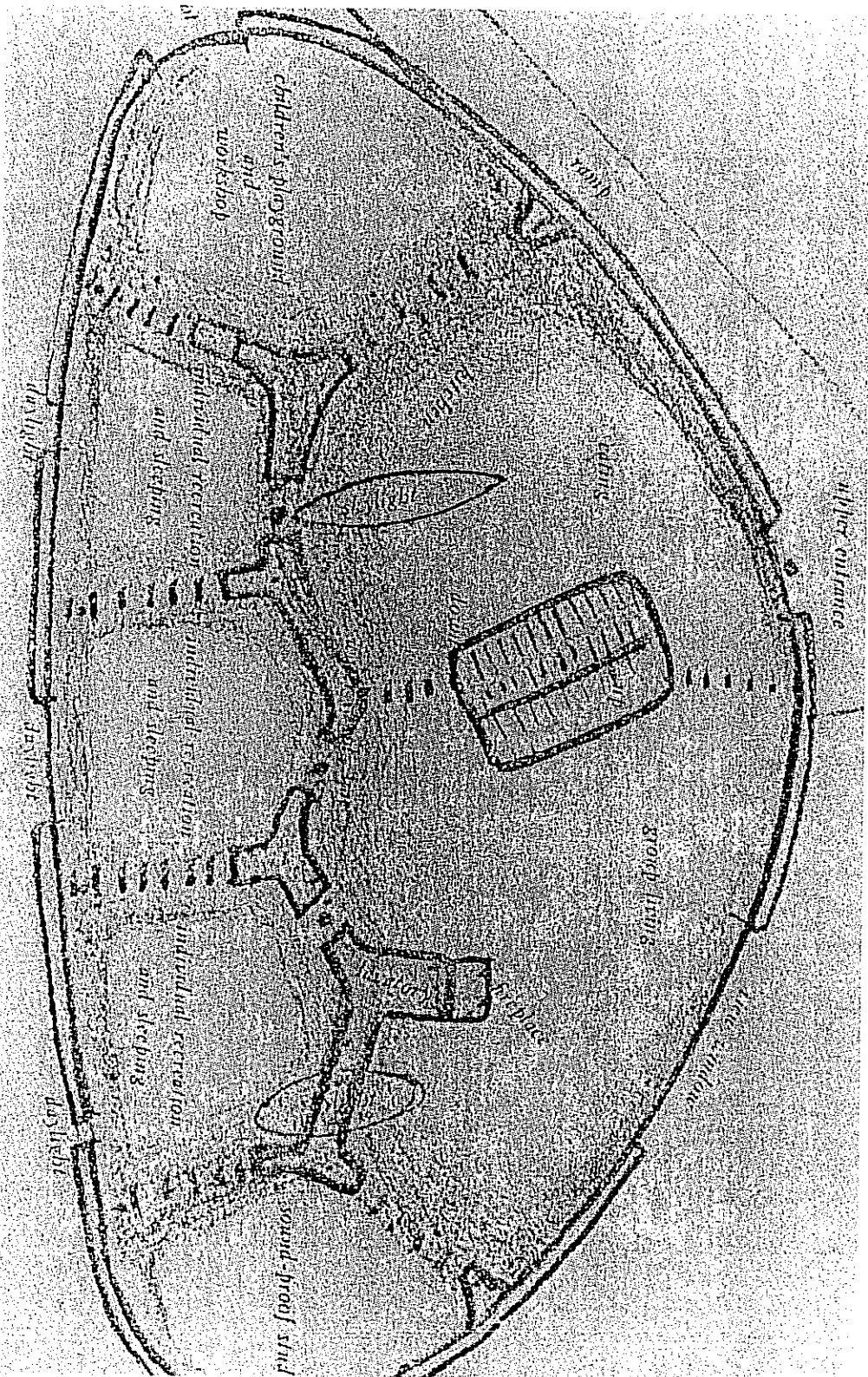
8. The Woodstock Theatre (Universal Theatre) 1931.
Kiesler Papers.



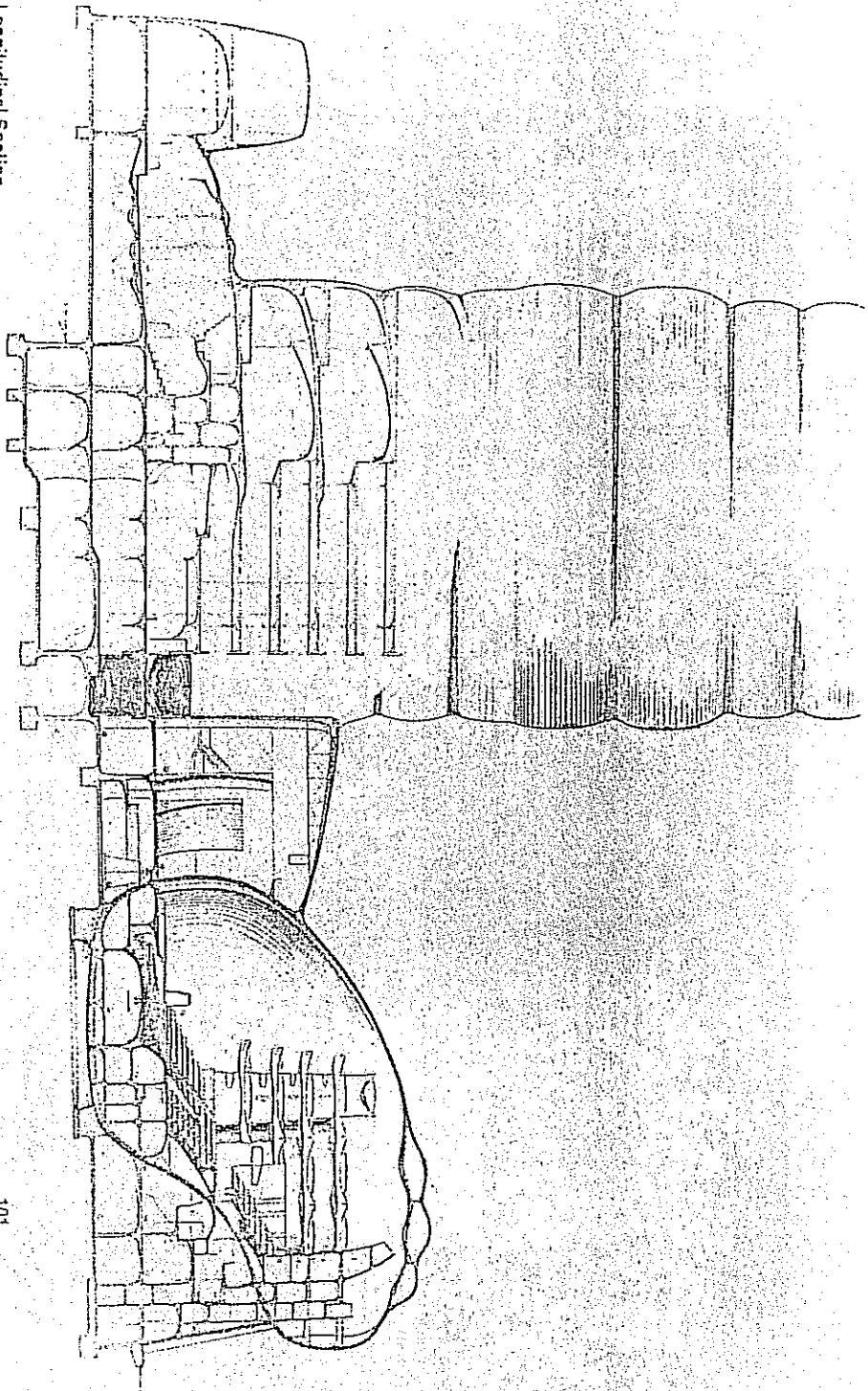
9. Film Guild Theatre, 1928. Kiesler Papers.



10. The Endless House, 1952: Plan. Kiesler Papers.

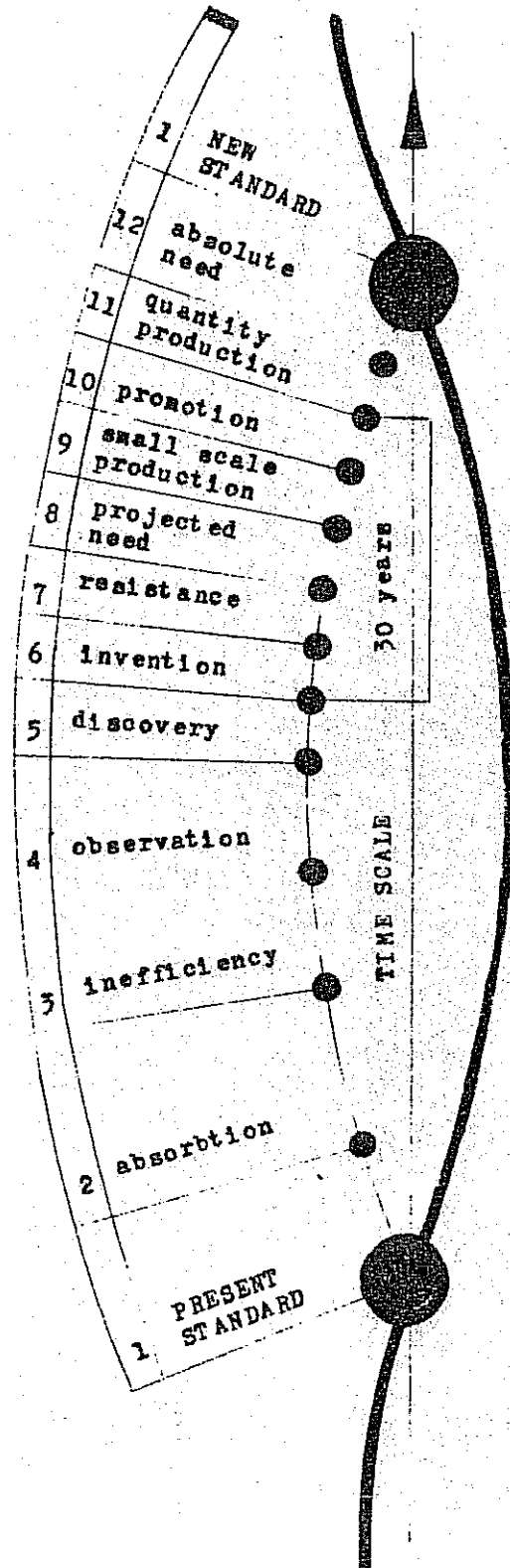


11. The Endless Theatre, 1960: Section. *The Ideal Theatre: Eight Concepts* (New York: American Federation of the Arts, 1963).

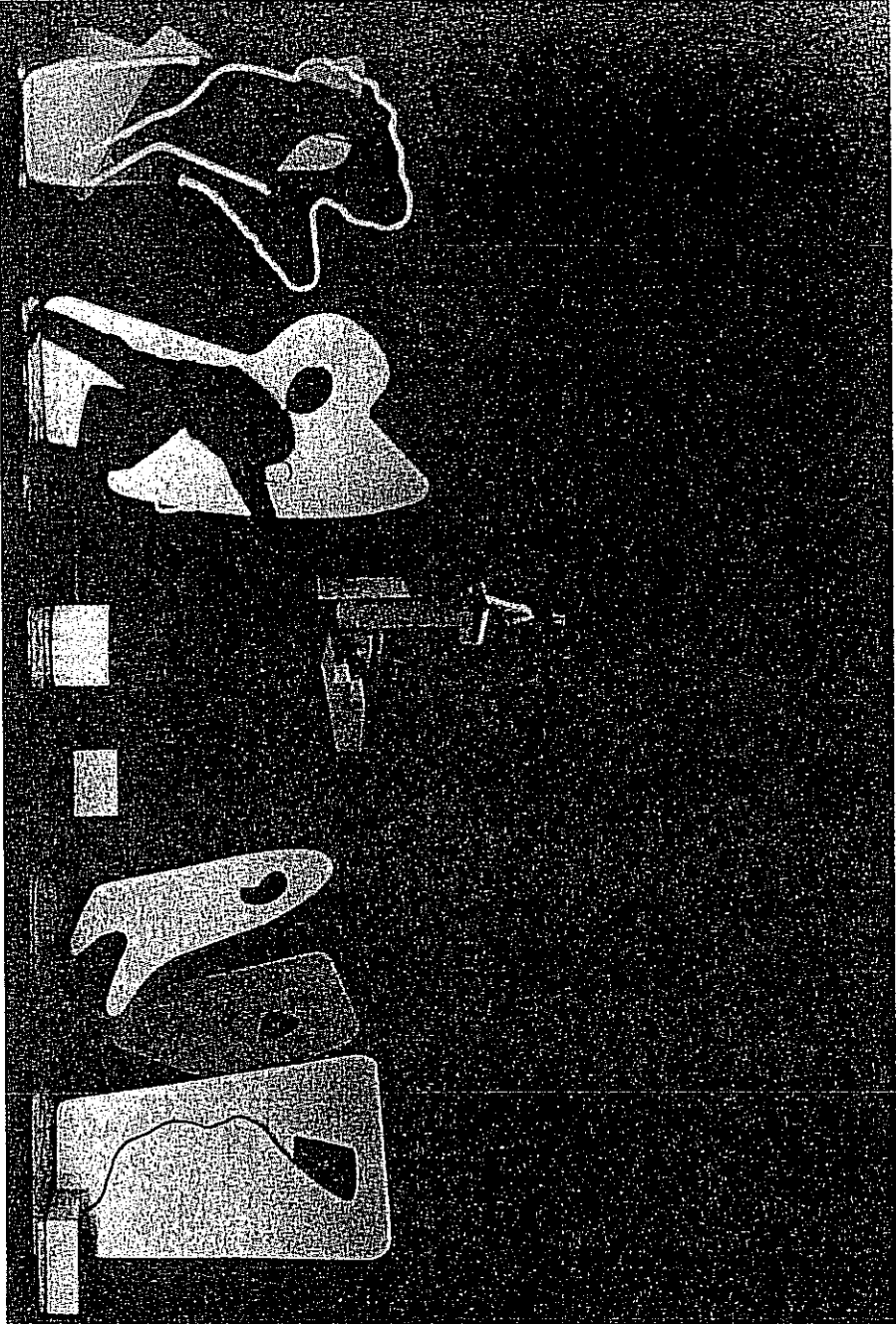


Longitudinal Section

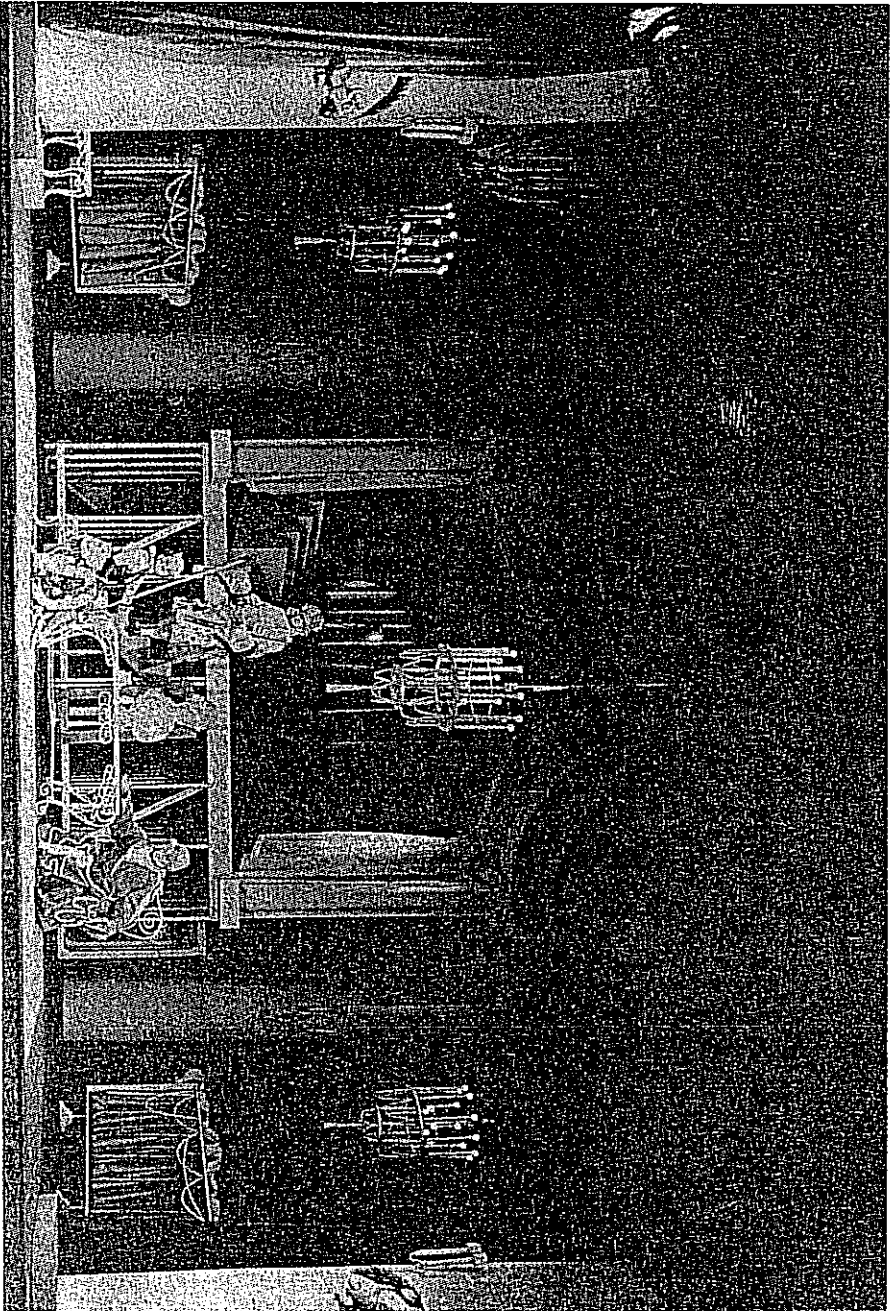
12. The Process of Technological Change. Frederick Kiesler, "On Correalism and Biotechnique," *Architectural Record*, LXXXVI (September, 1939), p. 62. Redrawn and simplified by R. L. Held.



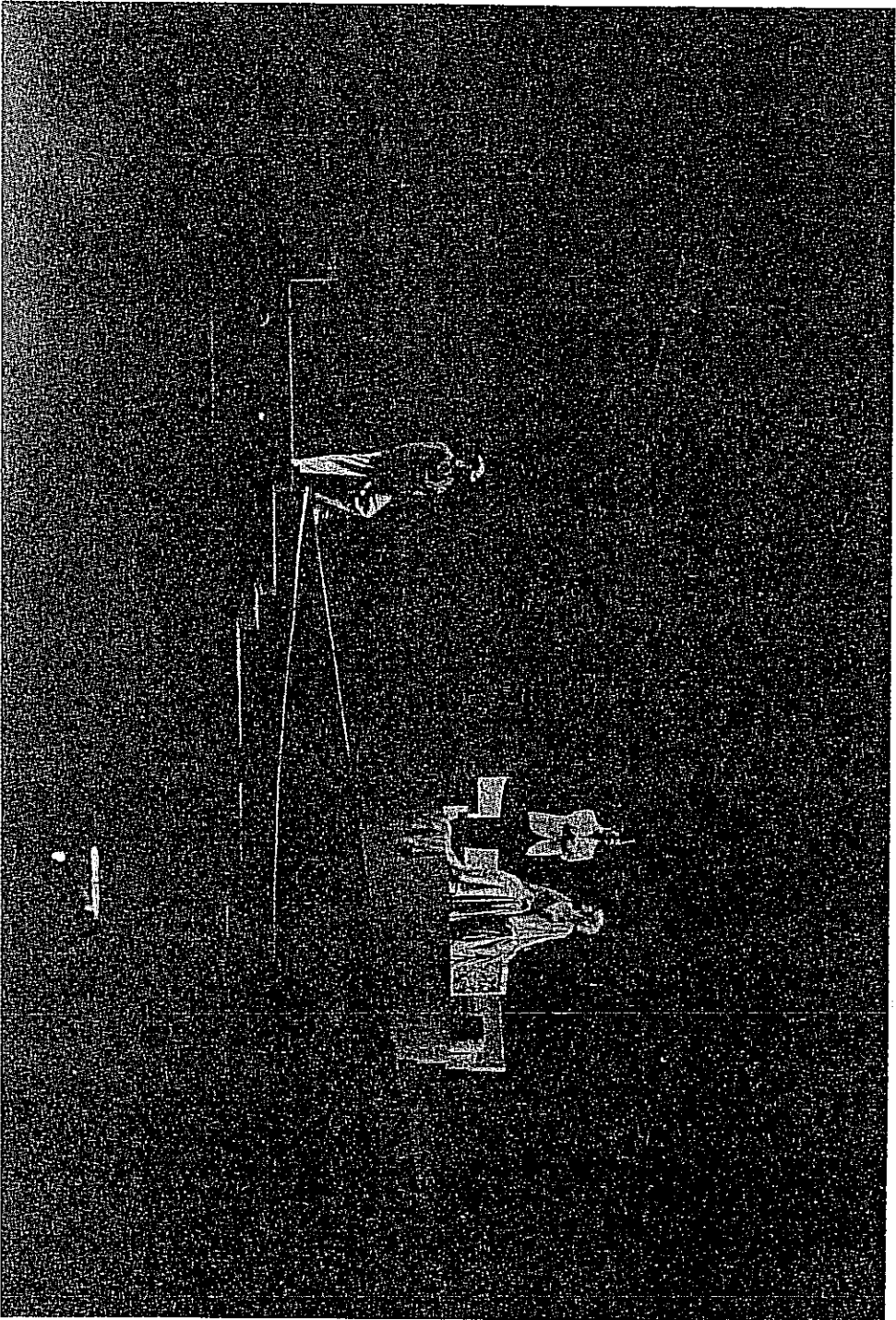
13. *Helen Retires, Act II: Helen Descends to the Isle of the Blest. Billy Rose Theatre Collection; The New York Public Library at Lincoln Center; Astor, Lenox and Tilden Foundations.*



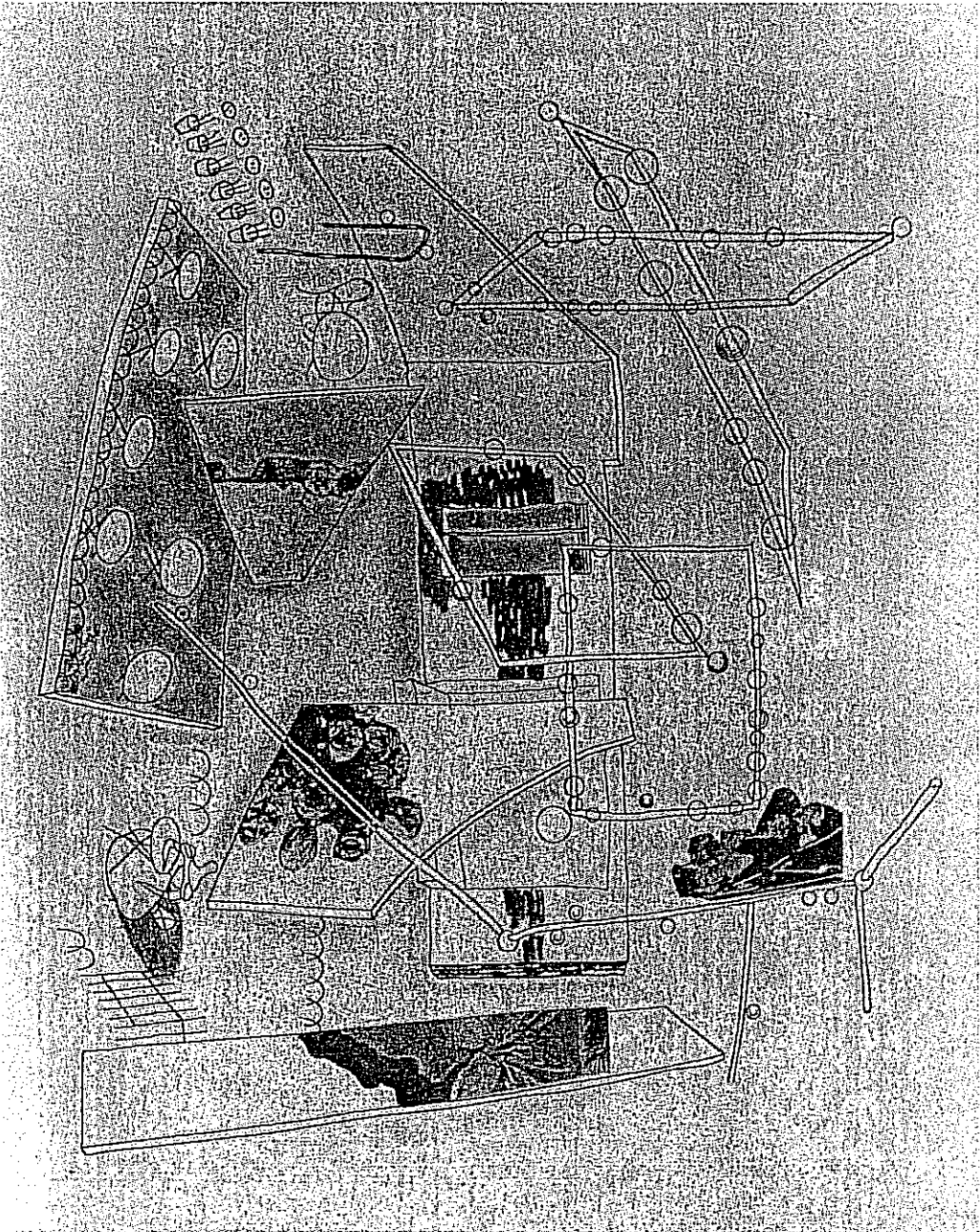
14. *Ariadne on Naxos*, Act I: Building of the Stage
Within the Stage. (Gottsched) Billy Rose Theatre
Collection; The New York Public Library at Lincoln
Center; Astor, Lenox and Tilden Foundations.



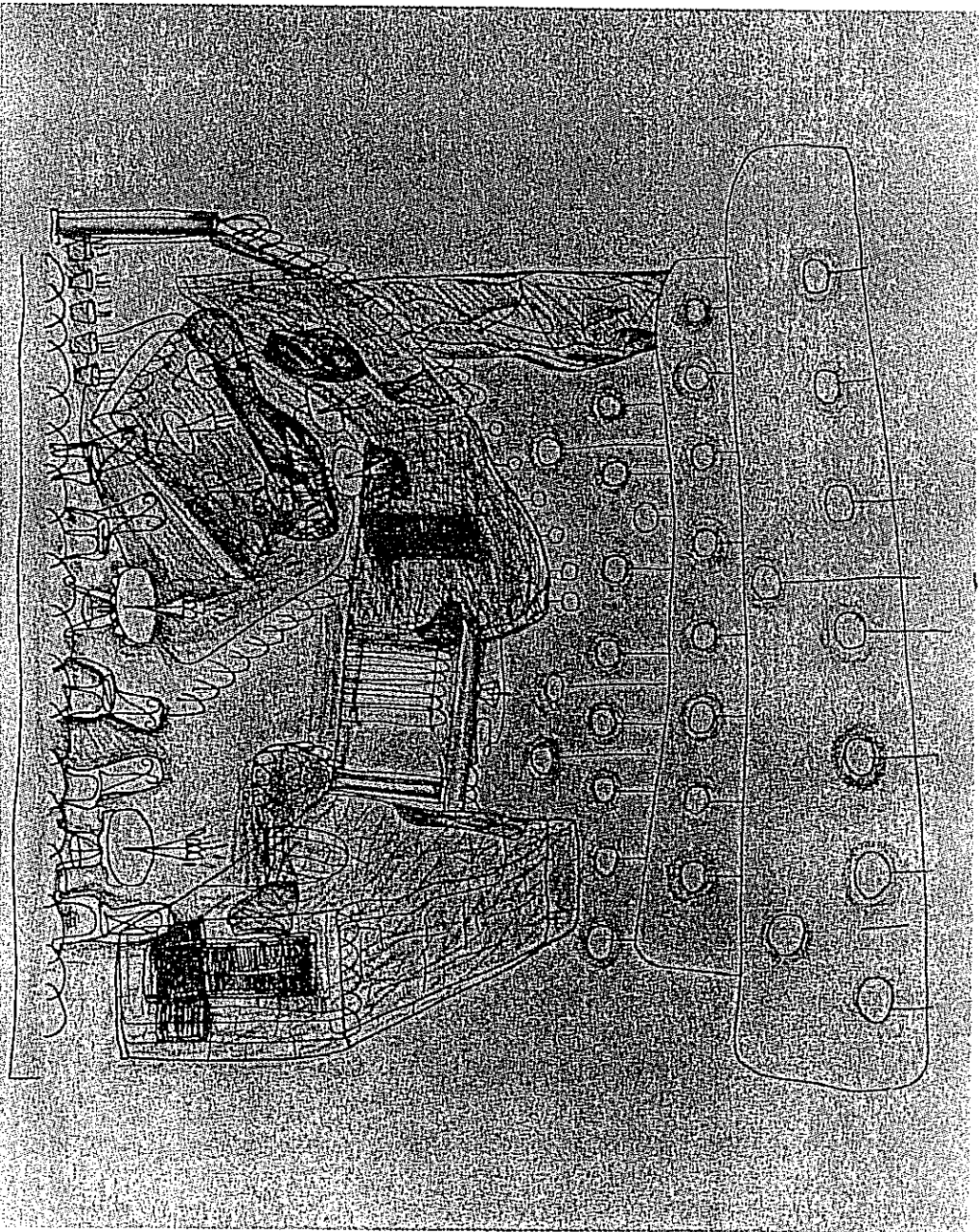
15. *In the Pasha's Garden: Leaf Projection.* (Carlo Edwards), Kiesel Papers.



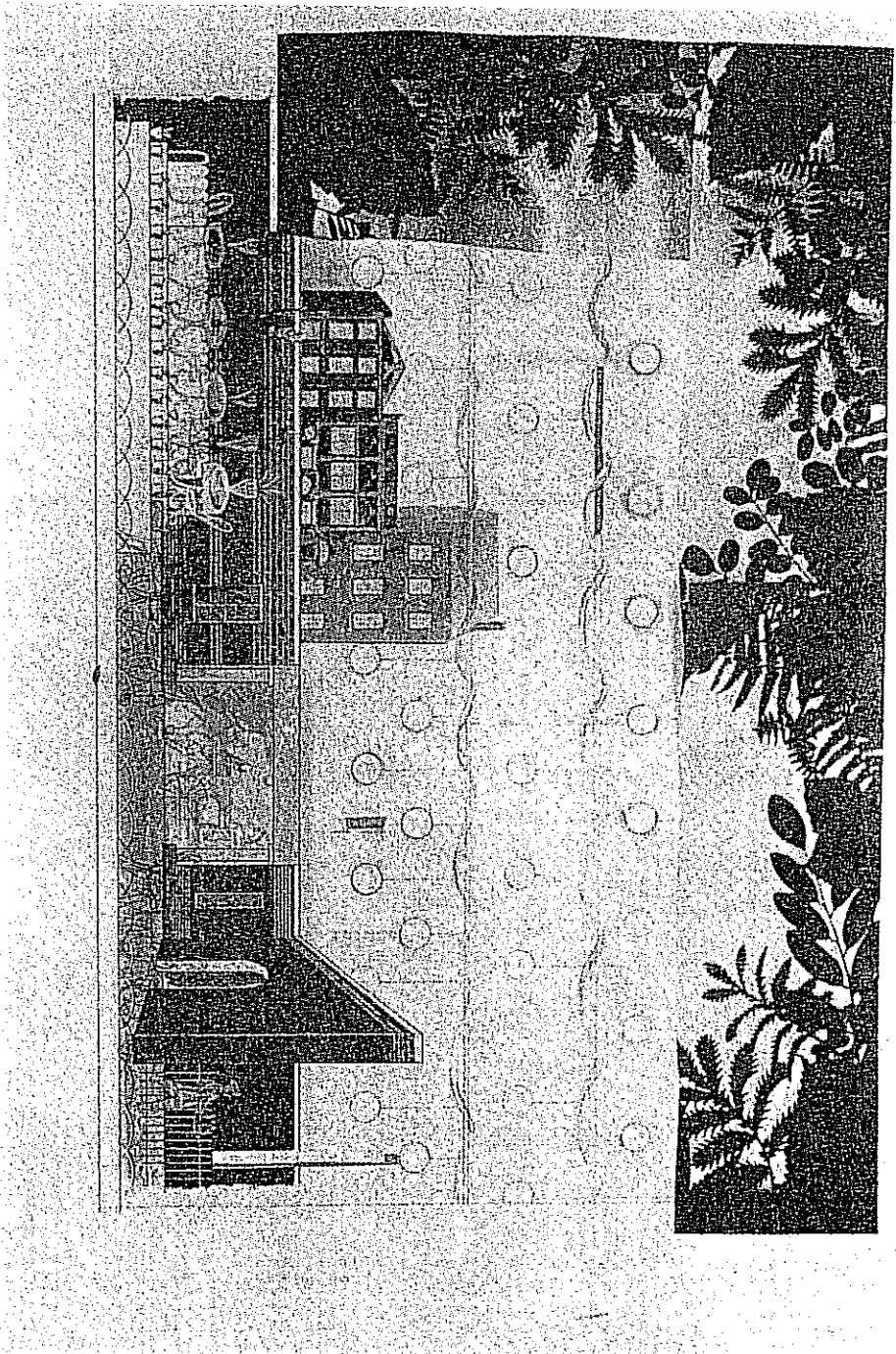
16. *Maria Malibran*, Act I: First Sketch. Billy Rose Theatre Collection; The New York Public Library at Lincoln Center; Astor, Lenox and Tilden Foundations.



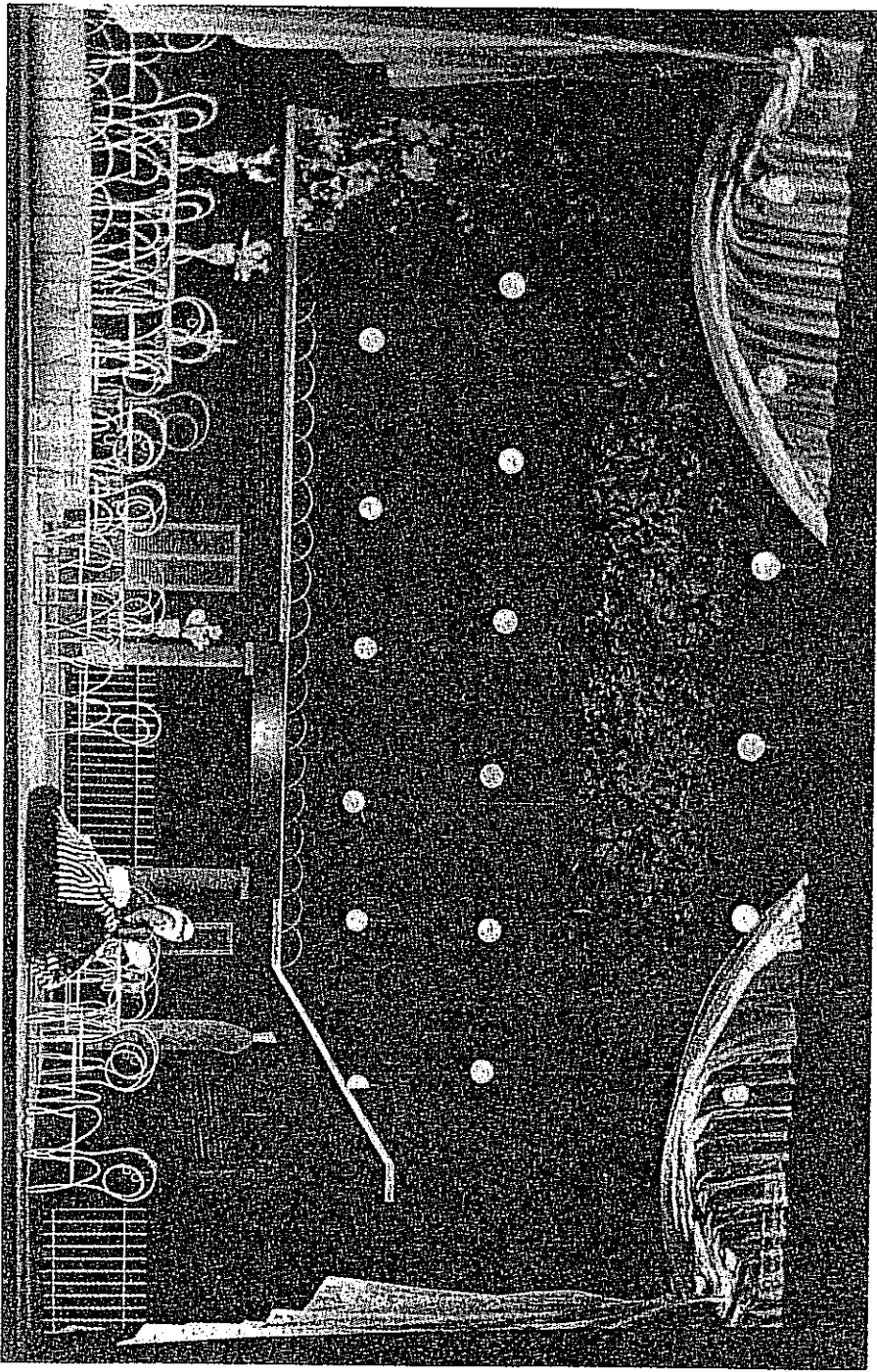
17. *Maria Malibran*, Act I: Second Sketch. Billy Rose Theatre Collection; The New York Public Library at Lincoln Center; Astor, Lenox and Tilden Foundations.



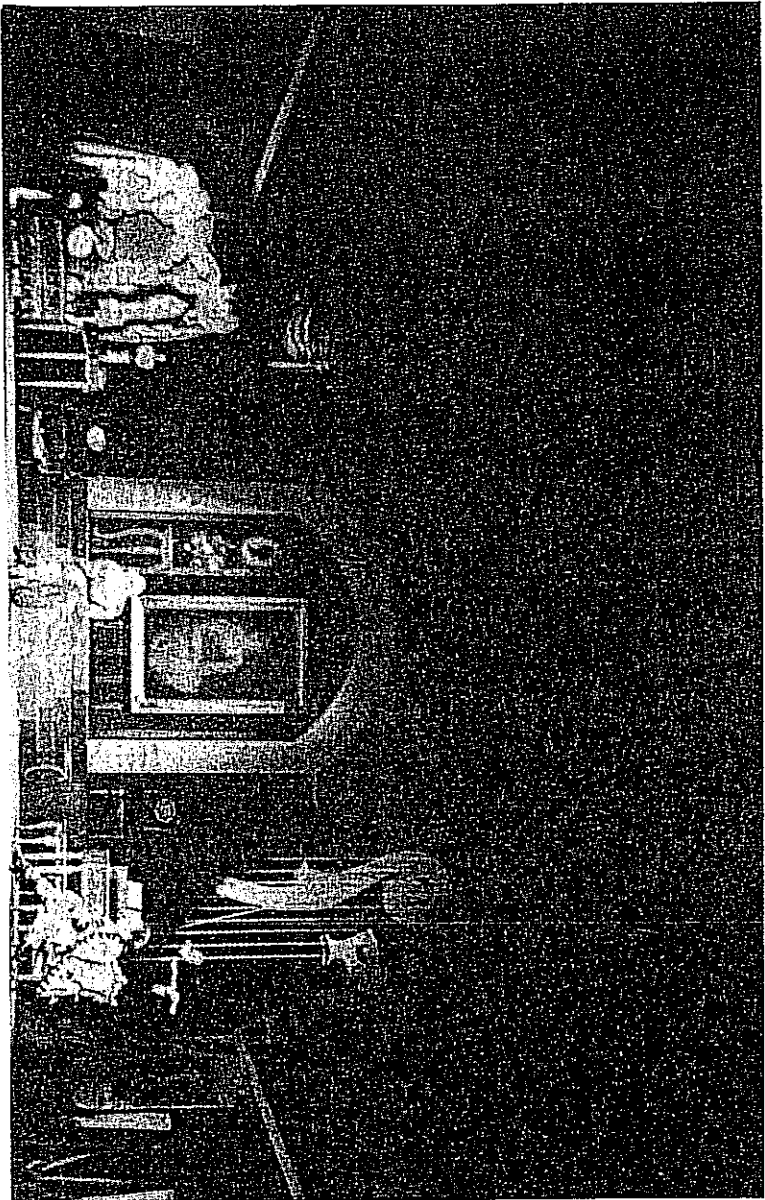
18. *Maria Malibran*, Act I: Collage. Billy Rose Theatre Collection;
The New York Public Library at Lincoln Center; Astor, Lenox
and Tilden Foundations.



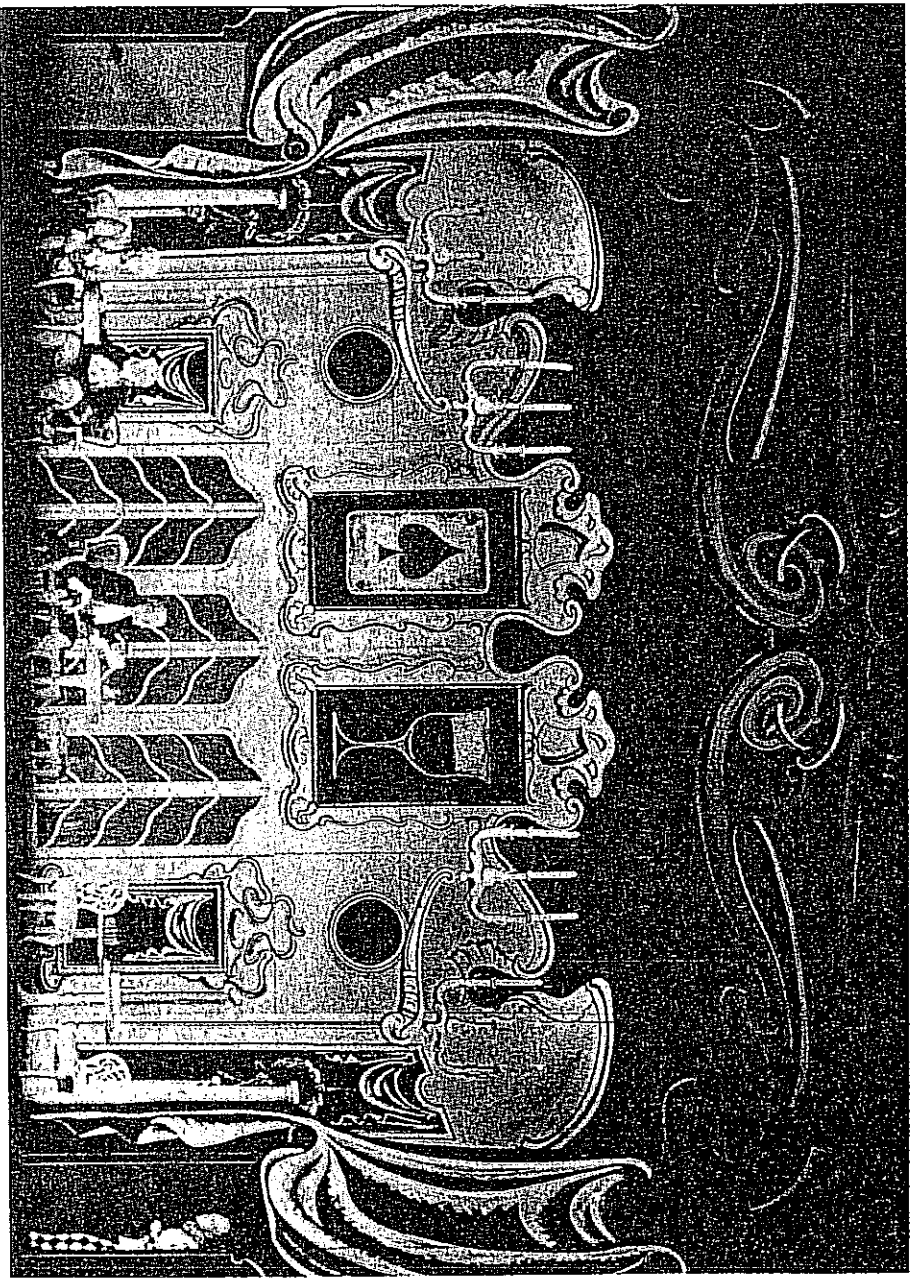
19. *Maria Malibran*, Act I: Completed Setting. Billy Rose Theatre Collection; The New York Public Library at Lincoln Center; Astor, Lenox and Tilden Foundations.



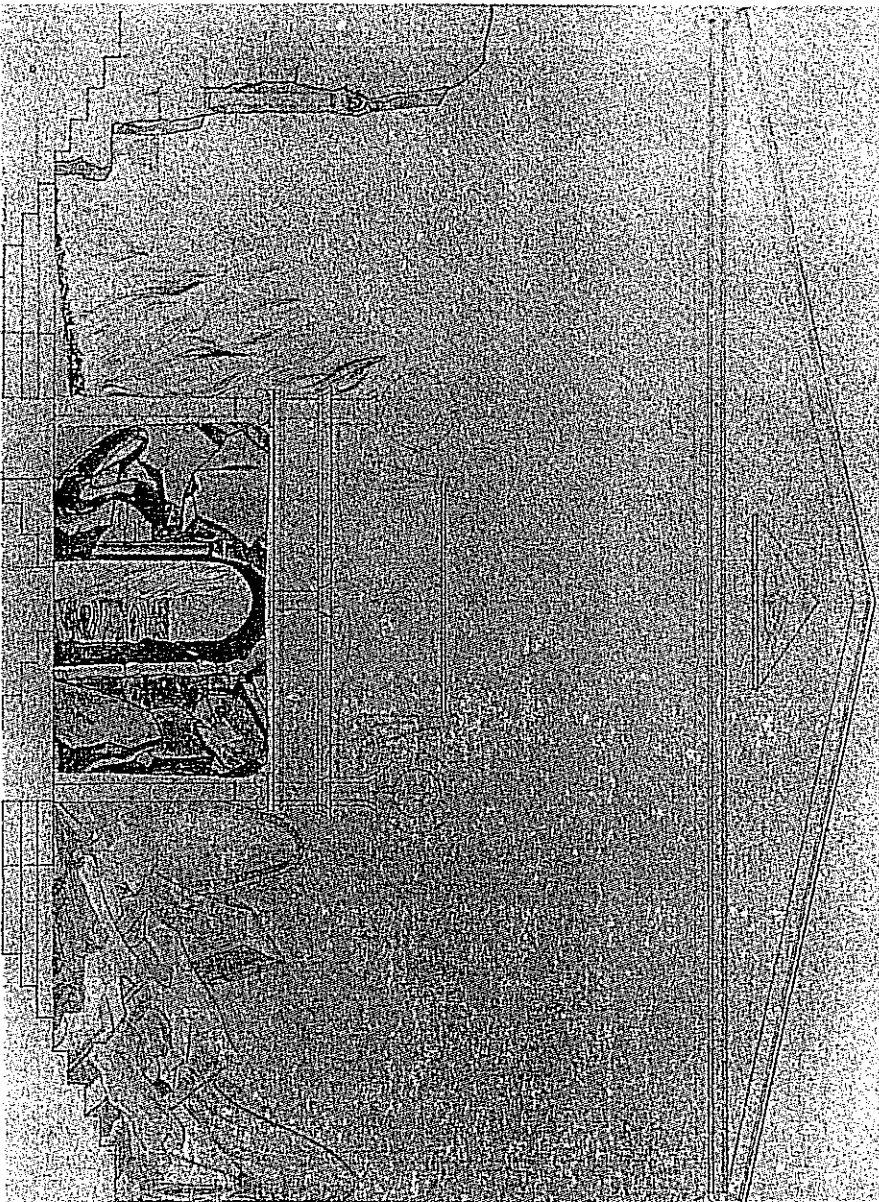
20. *The Tales of Hoffmann*, Act III. Billy Rose Theatre Collection; The New York Public Library at Lincoln Center; Astor, Lenox and Tilden Foundations.



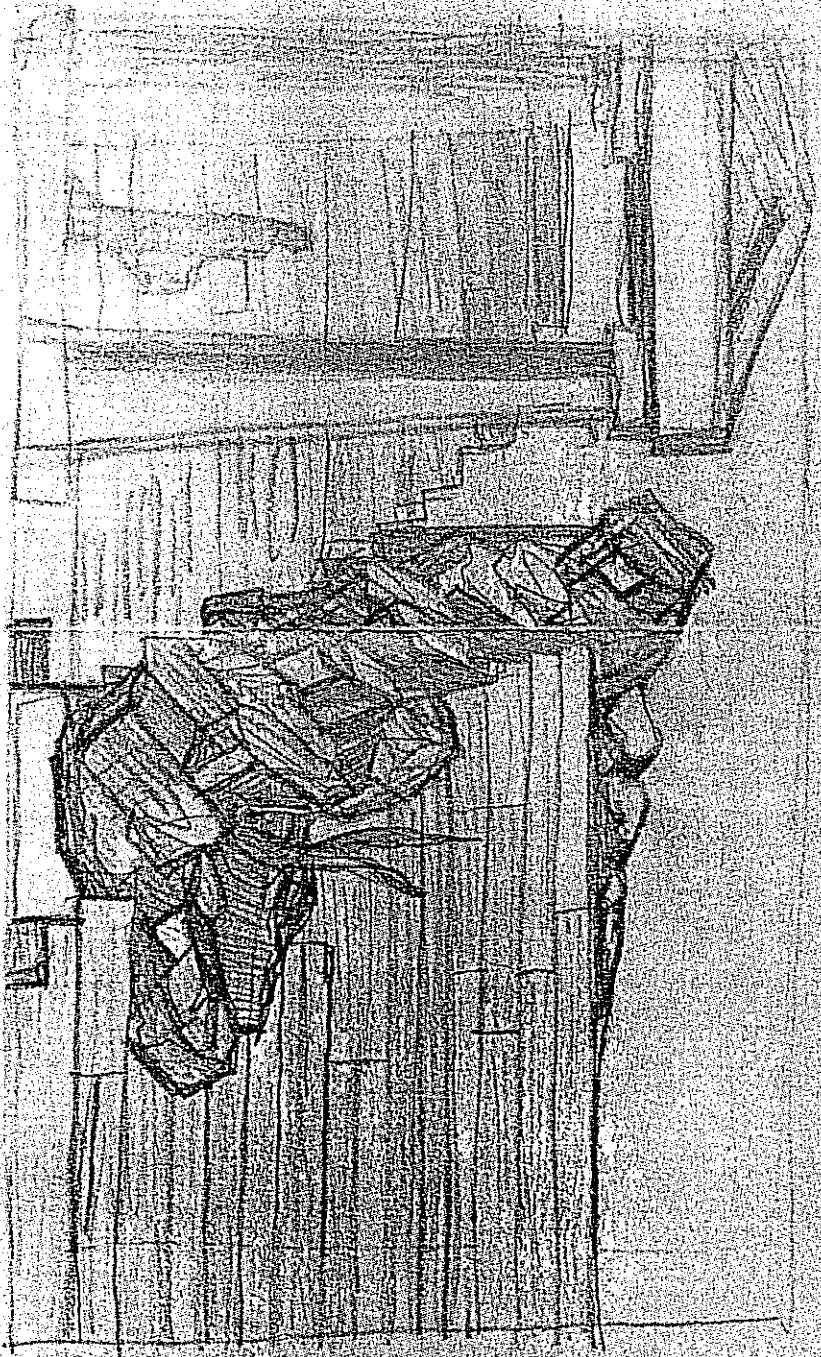
21. *The Curious Women*, Act I: The Club Room. Billy Rose Theatre Collection; The New York Public Library at Lincoln Center; Astor, Lenox and Tilden Foundations.



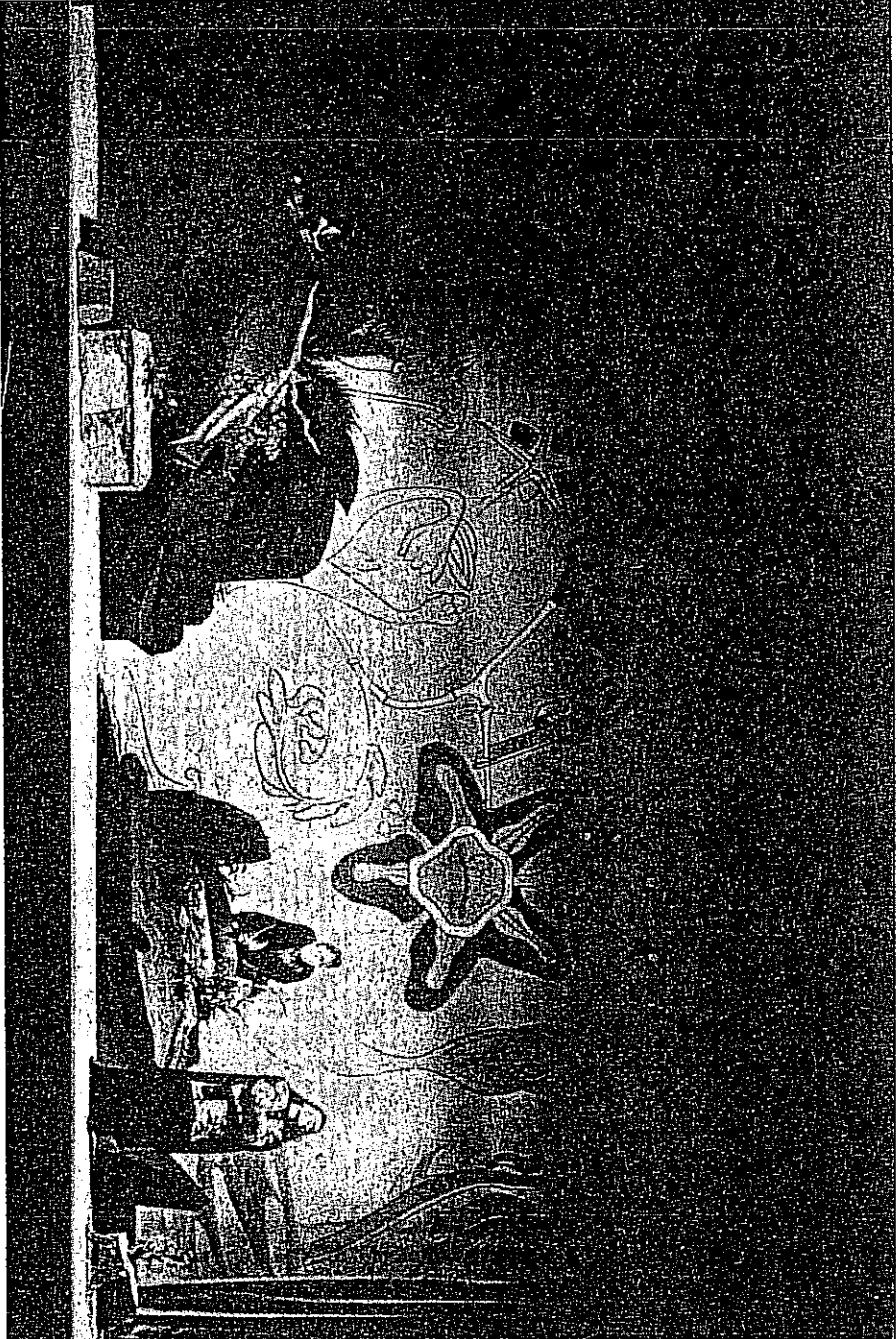
22. *The Magic Flute*: Drawing of the Basic Unit. Billy Rose Theatre Collection; The New York Public Library at Lincoln Center; Astor, Lenox and Tilden Foundations.



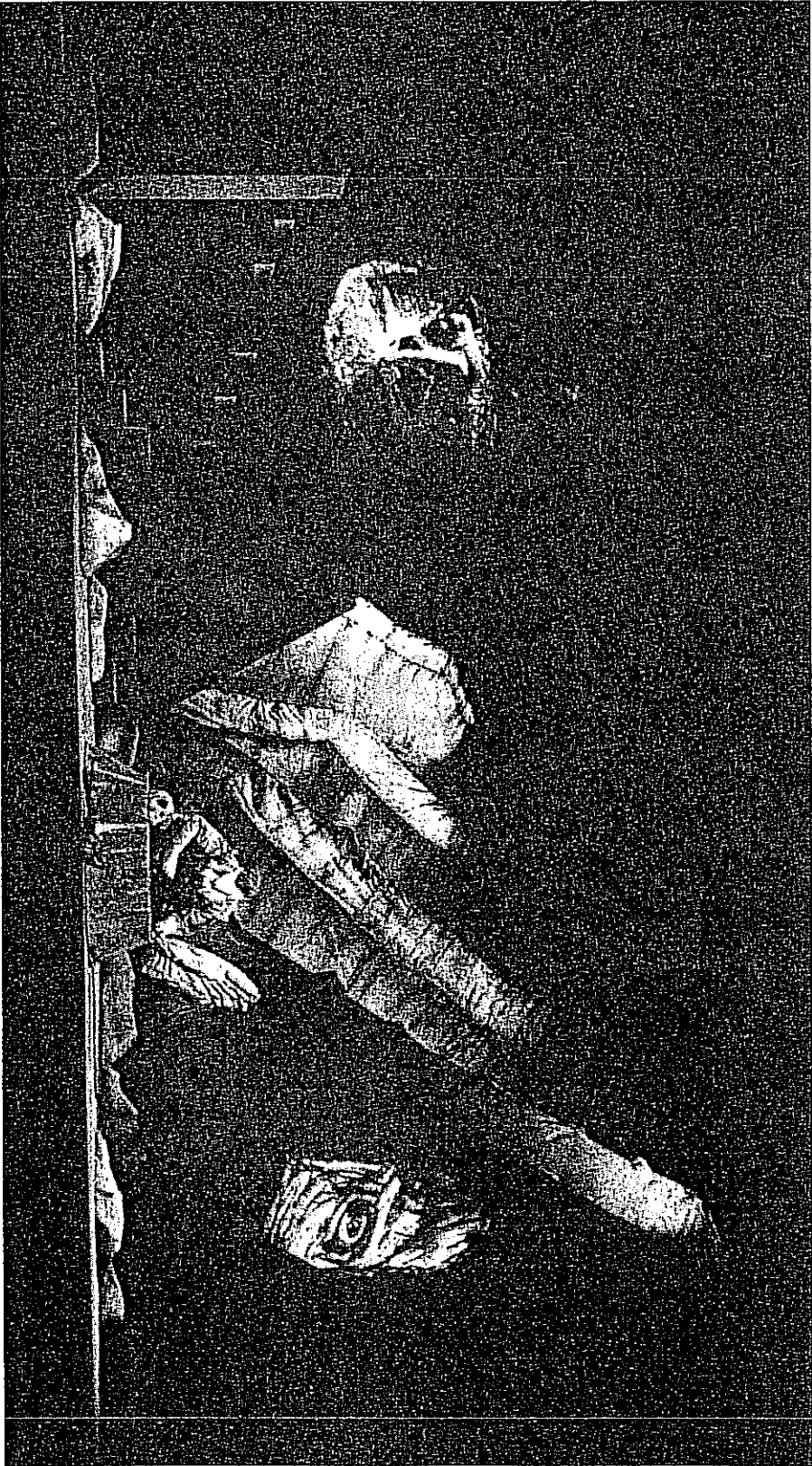
23. *Iphigenia in Tauris*. Kiesel Papers.



24. *The Mother*, Scene ii: The Garden of Death
(Gottschow-Schliener) Billy Rose Theatre Collection;
The New York Public Library at Lincoln Center;
Astor, Lenox and Tilden Foundations.



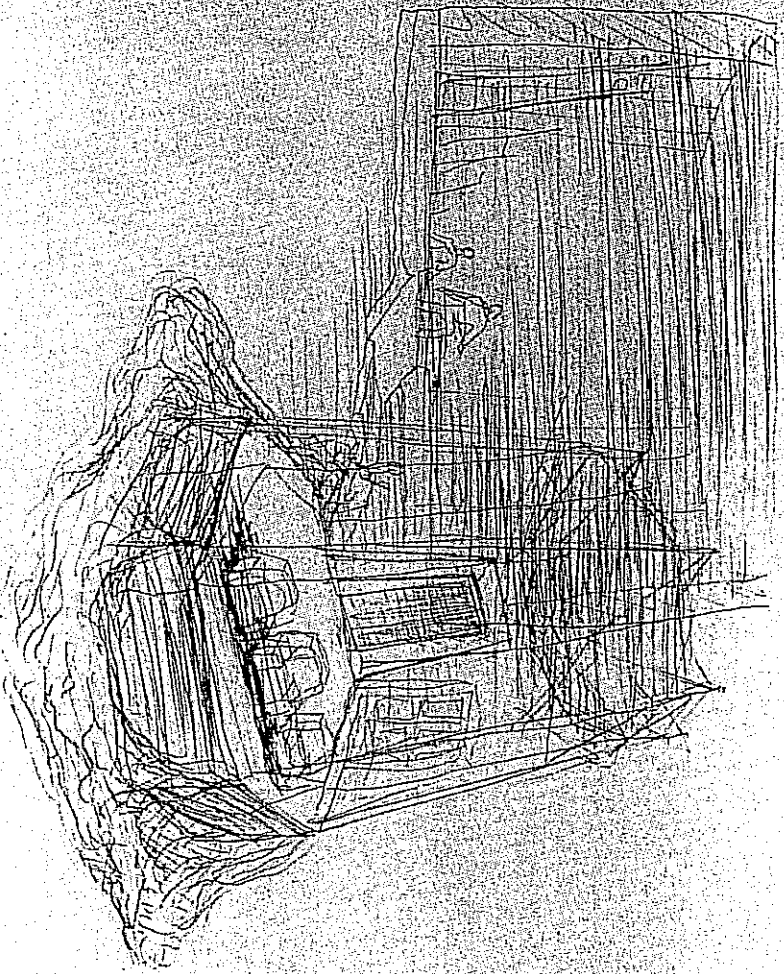
28. *Der Freischütz*, Act II: Caspar Conjuring (Gottsch-Schliener), Billy Rose Theatre Collection; The New York Public Library at Lincoln Center; Astor, Lenox and Tilden Foundations.



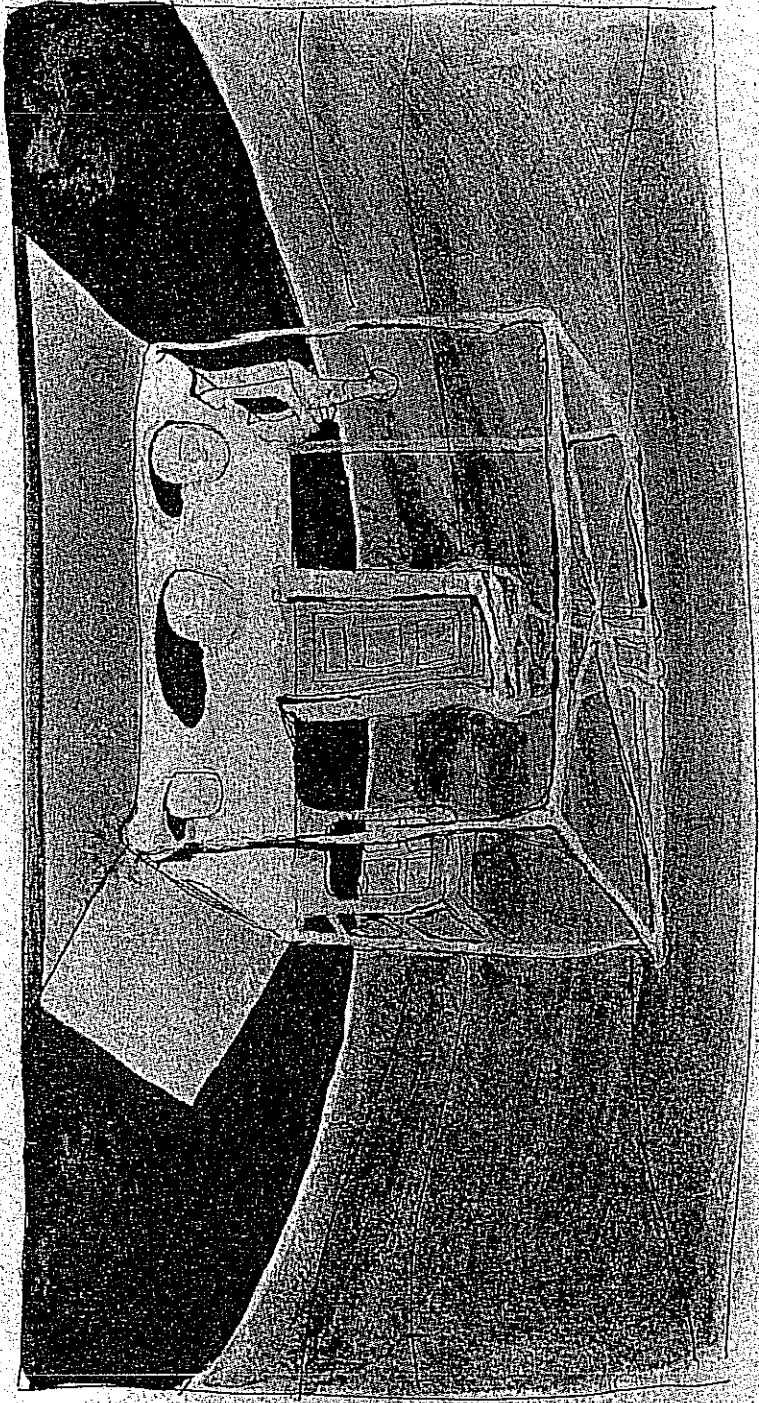
29. *No Exit*: Road Drawing, Kiesler Papers.



30. *No Exit*: Island Drawing, Kiesler Papers.



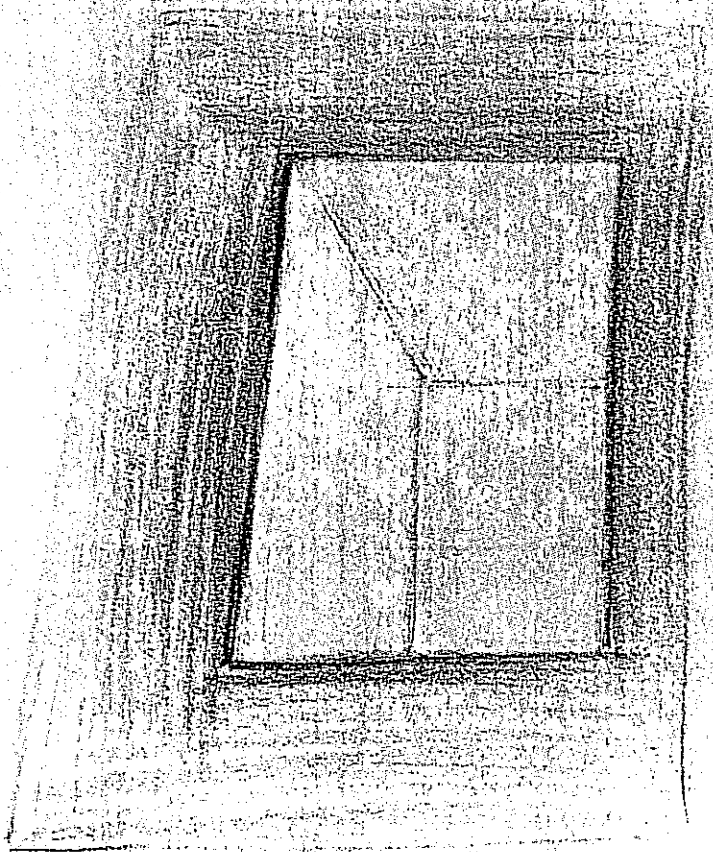
31. *No Exit*: Pedestal Drawing, Kiesler Papers.



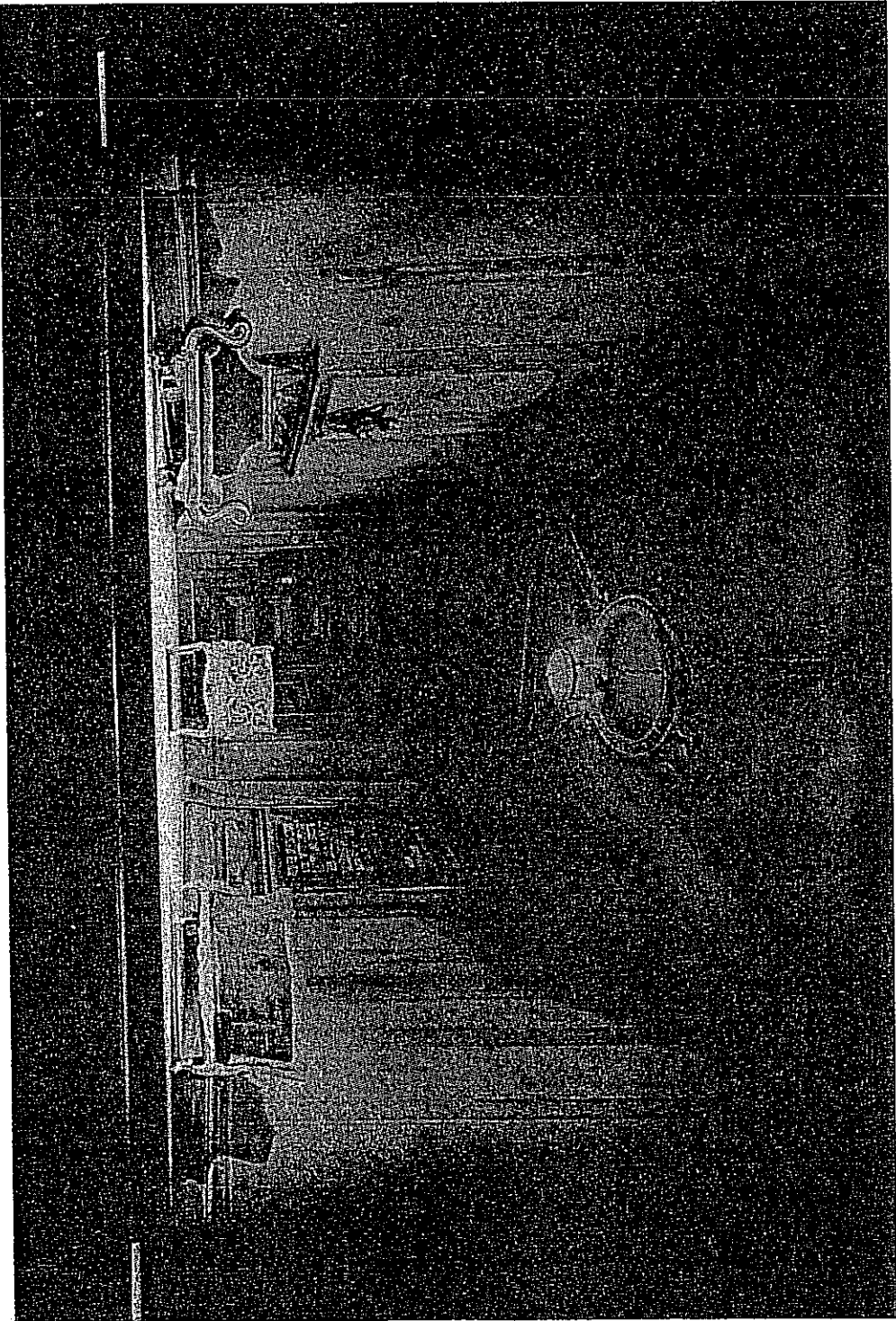
32. *No Exit*: First Surrealist Drawing, Kiesler Papers.



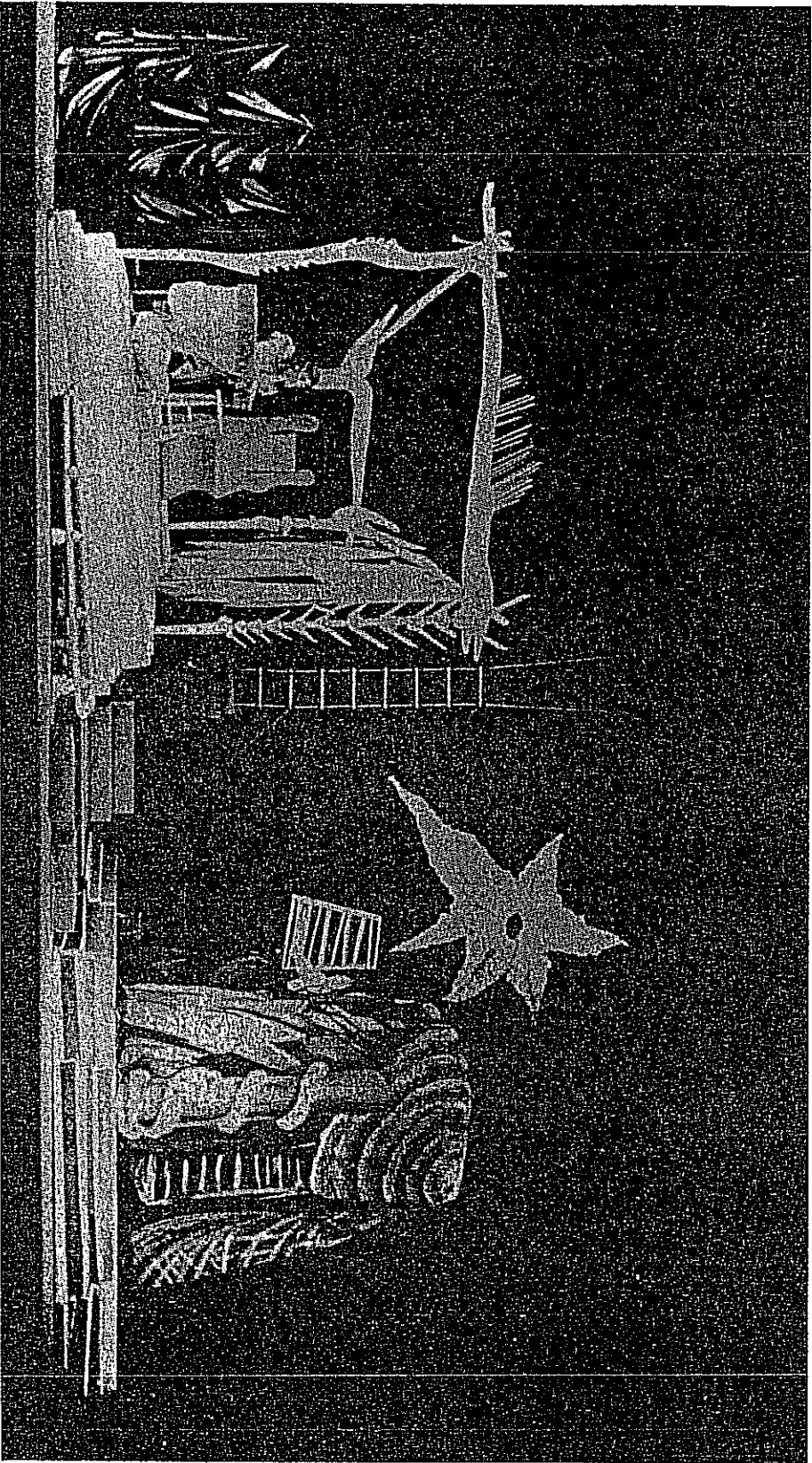
33. *No Exit*: Basic Funnel Shape. Kriesler Papers.



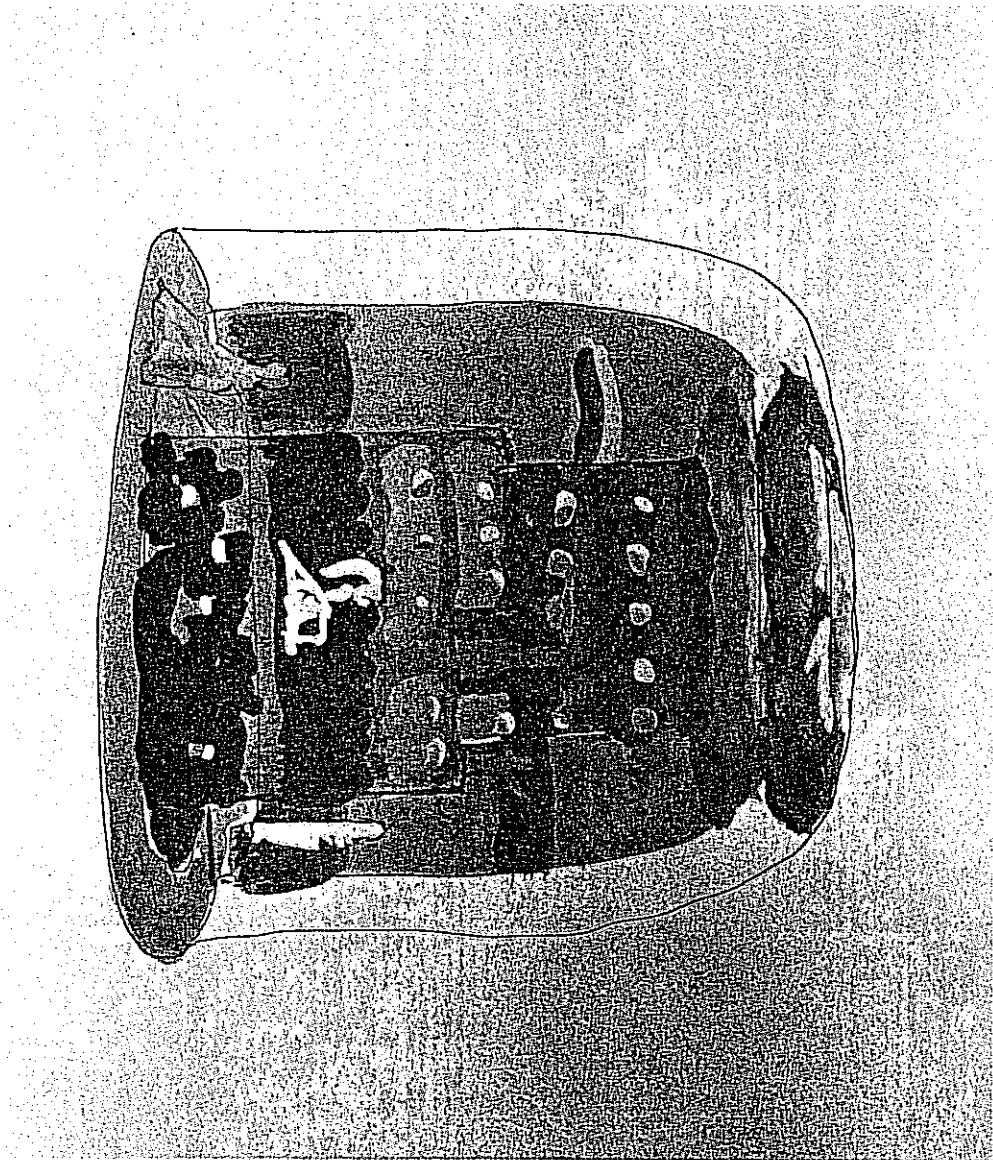
34. *No Exit*: Completed Set. Kiesler Papers.



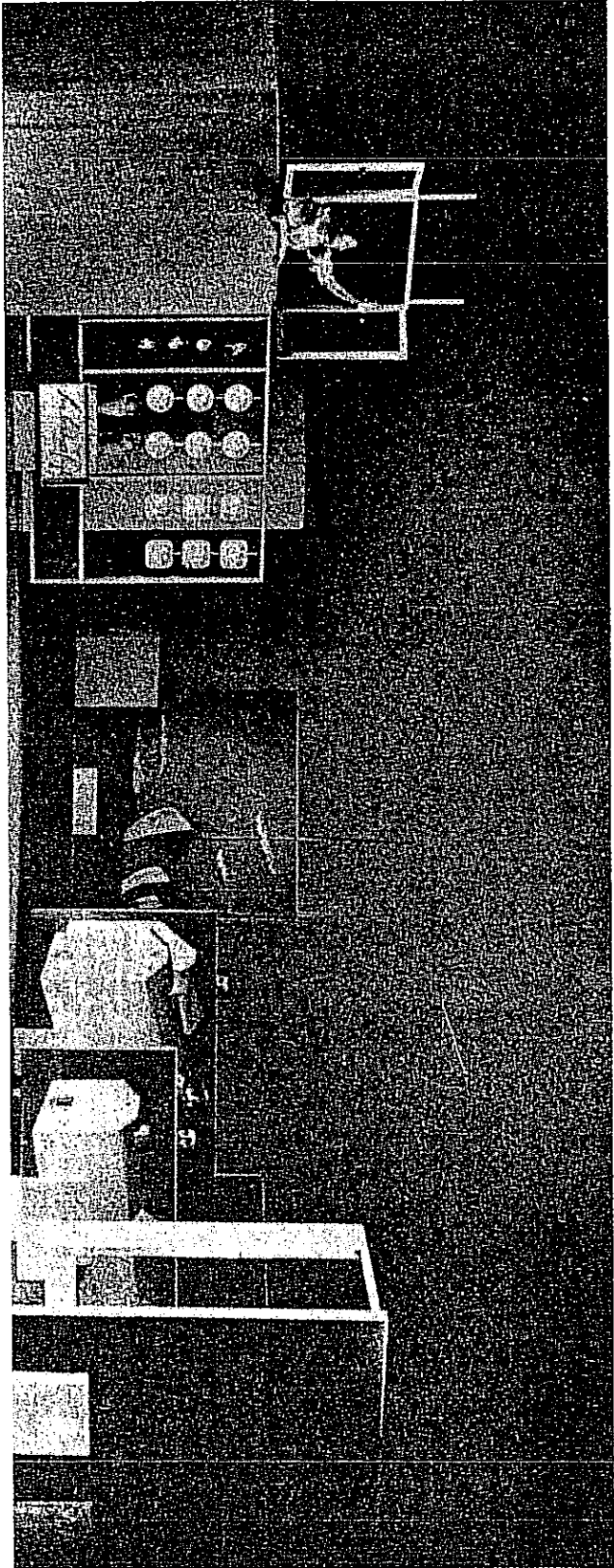
35. *The Poor Sailor*: Completed Set. Kiesler Papers.



36. *Oedipus Rex*: Rendering of the Stage. Kiesler Papers.



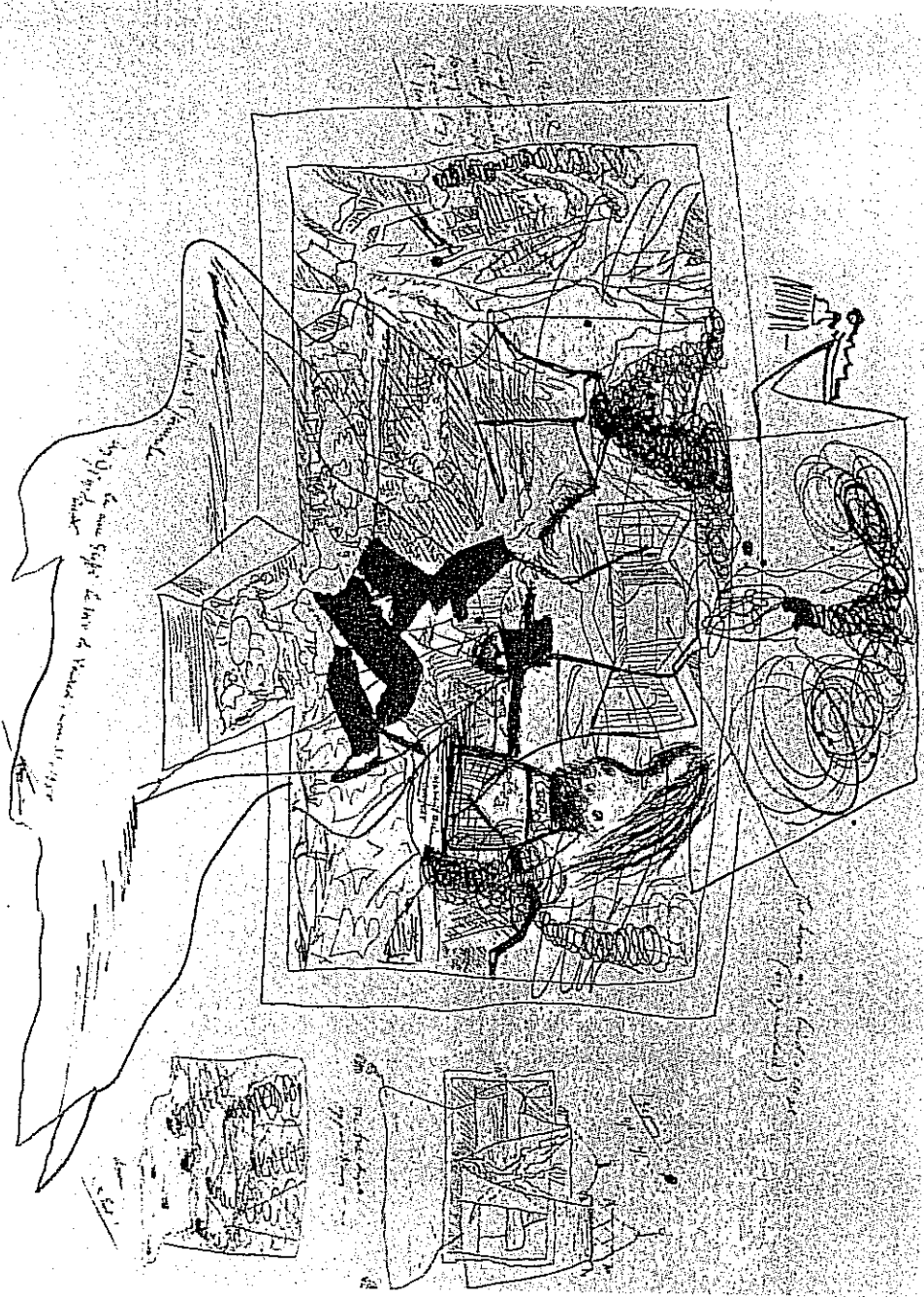
37. *Angelique*. Kiesler Papers.



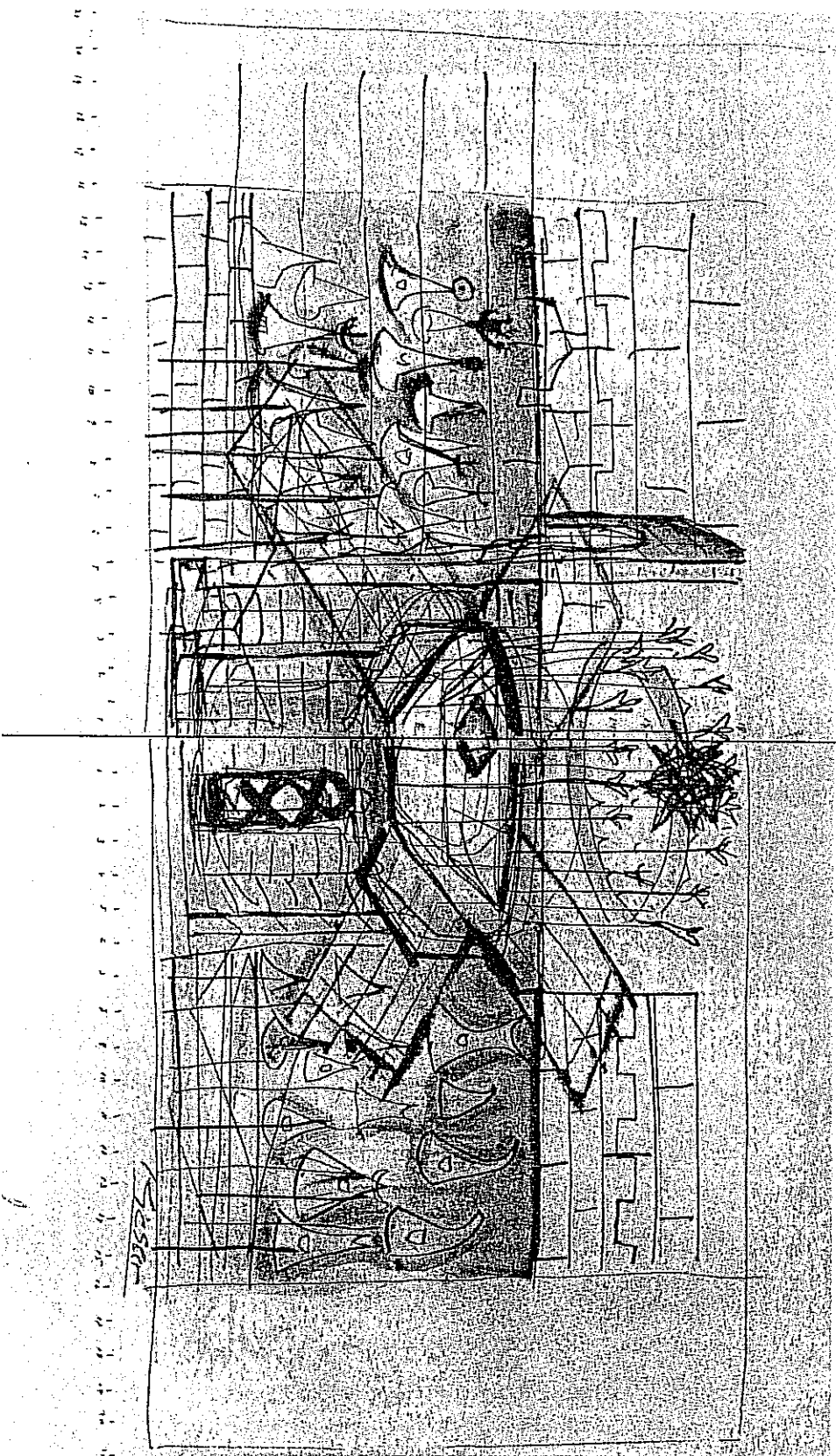
38. *The Magic Flute*: 1949 Version. Kiesler Papers.



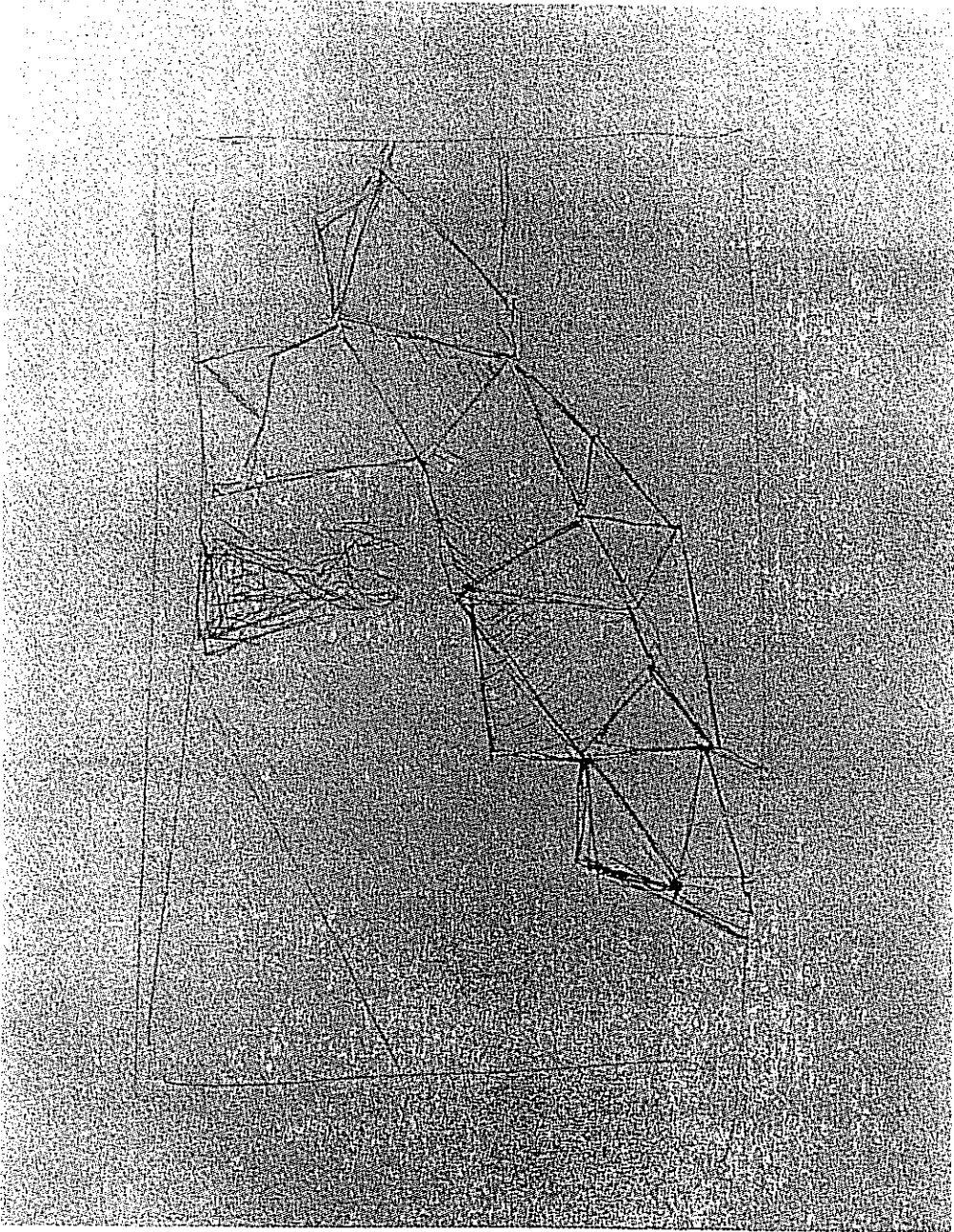
40. Sodom and Gomorrah: Drawing, Kiesler Papers.



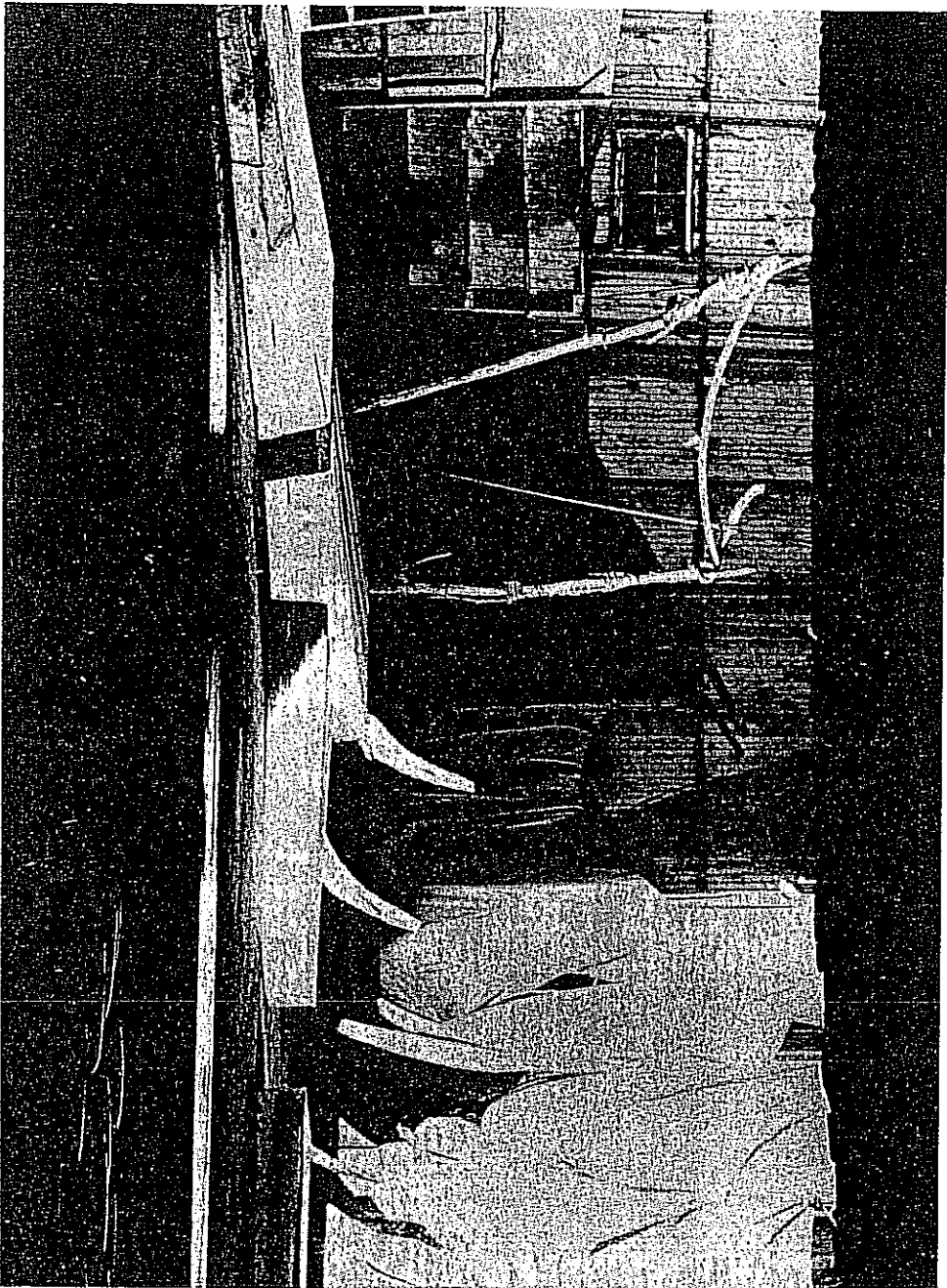
41. *The Prisoner: Drawing for the Final Scene. Kiesler Papers.*



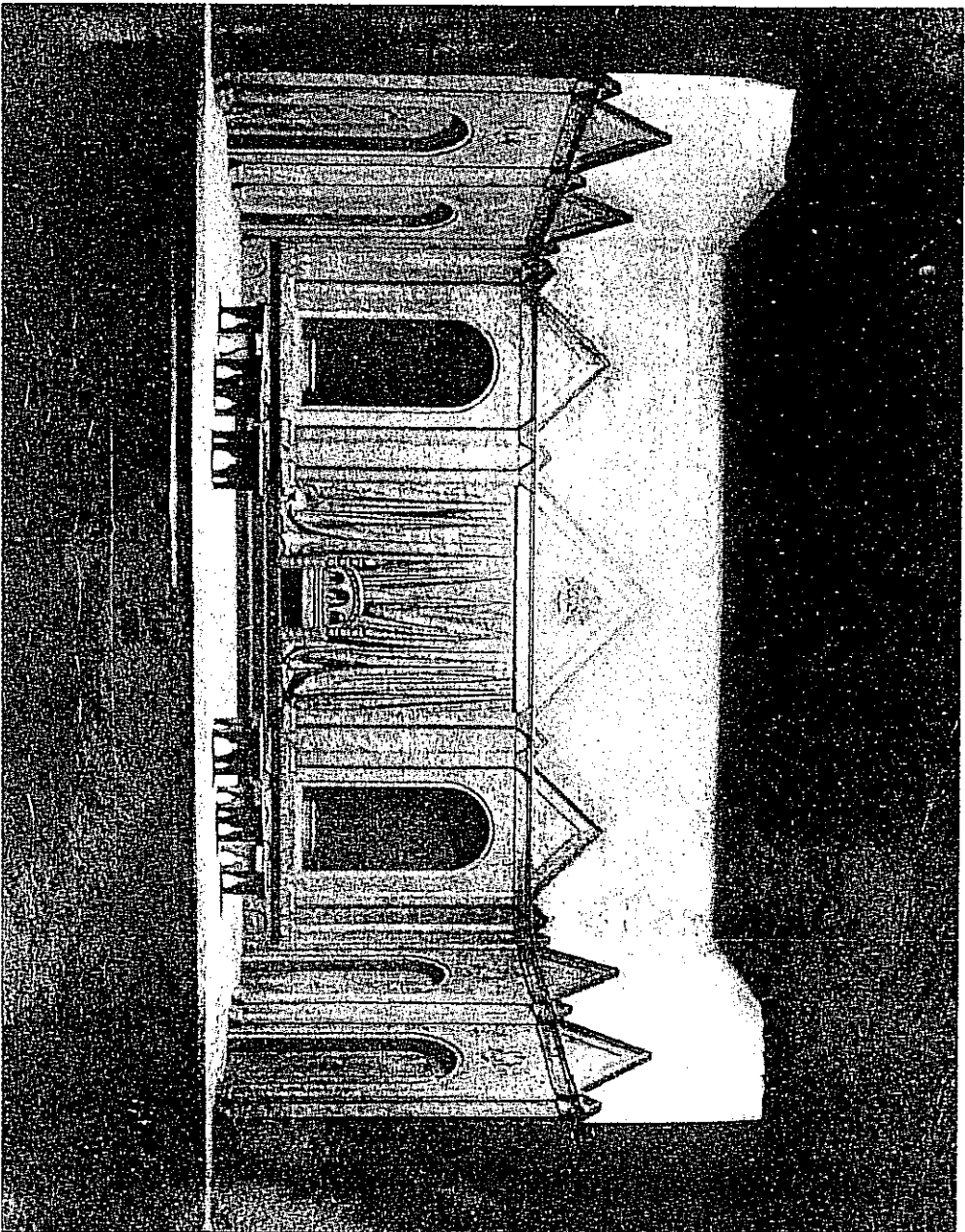
43. *The Triumph of St. Joan*. Kiesler Papers.



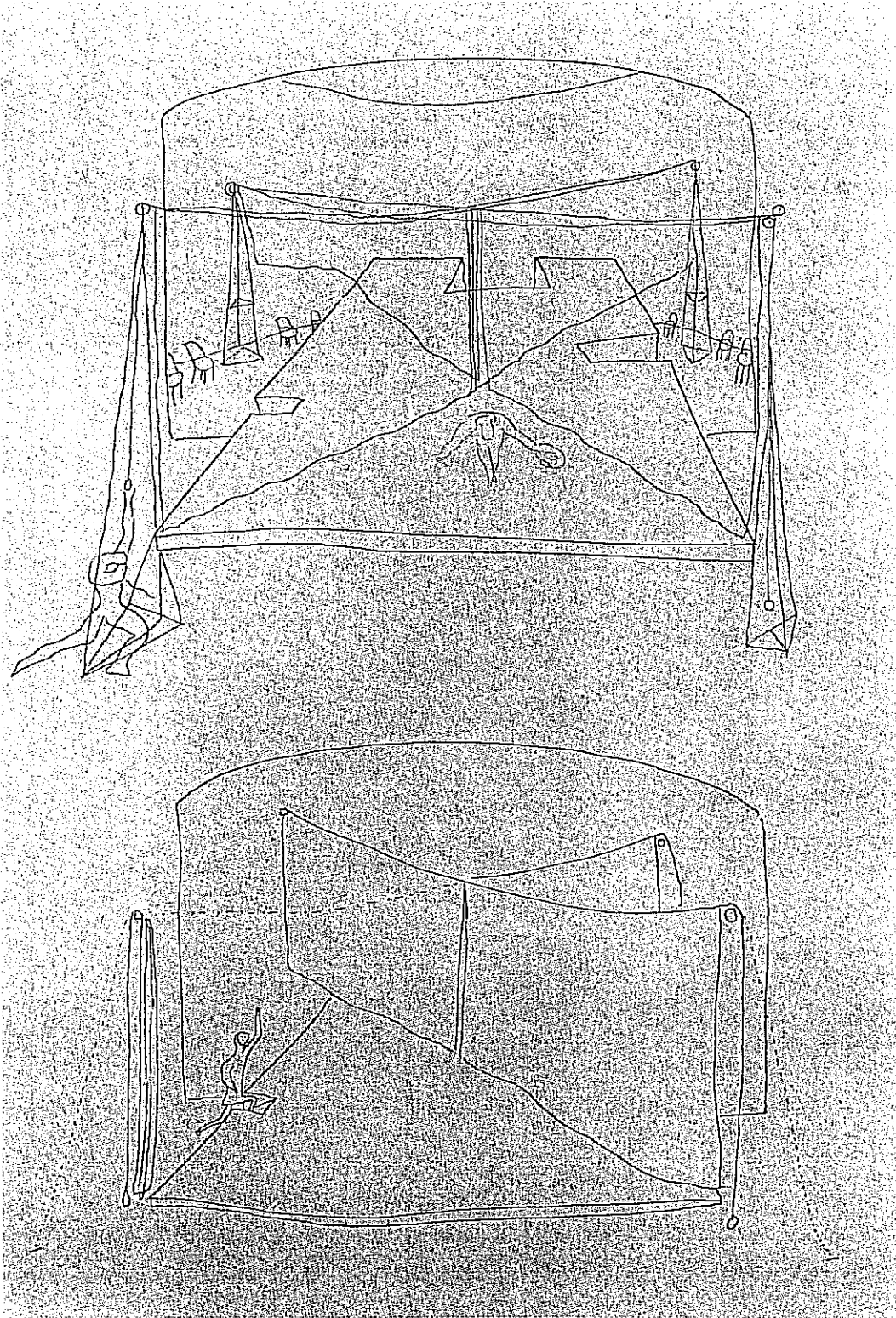
44. *The Tempest*: Martha's Vineyard, 1952. Kiesler Papers.



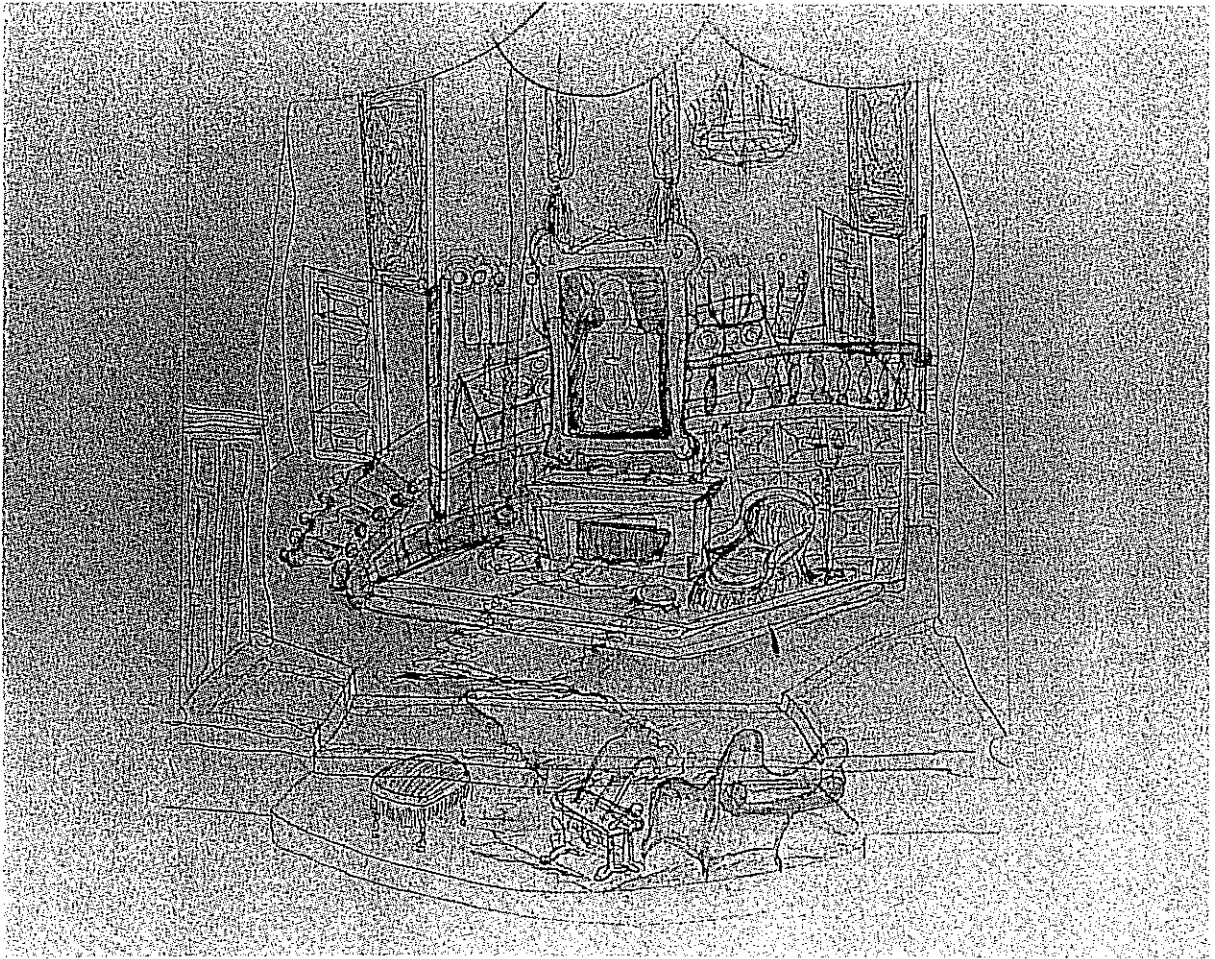
45. *Henry IV*: 1958. Kiesler Papers.



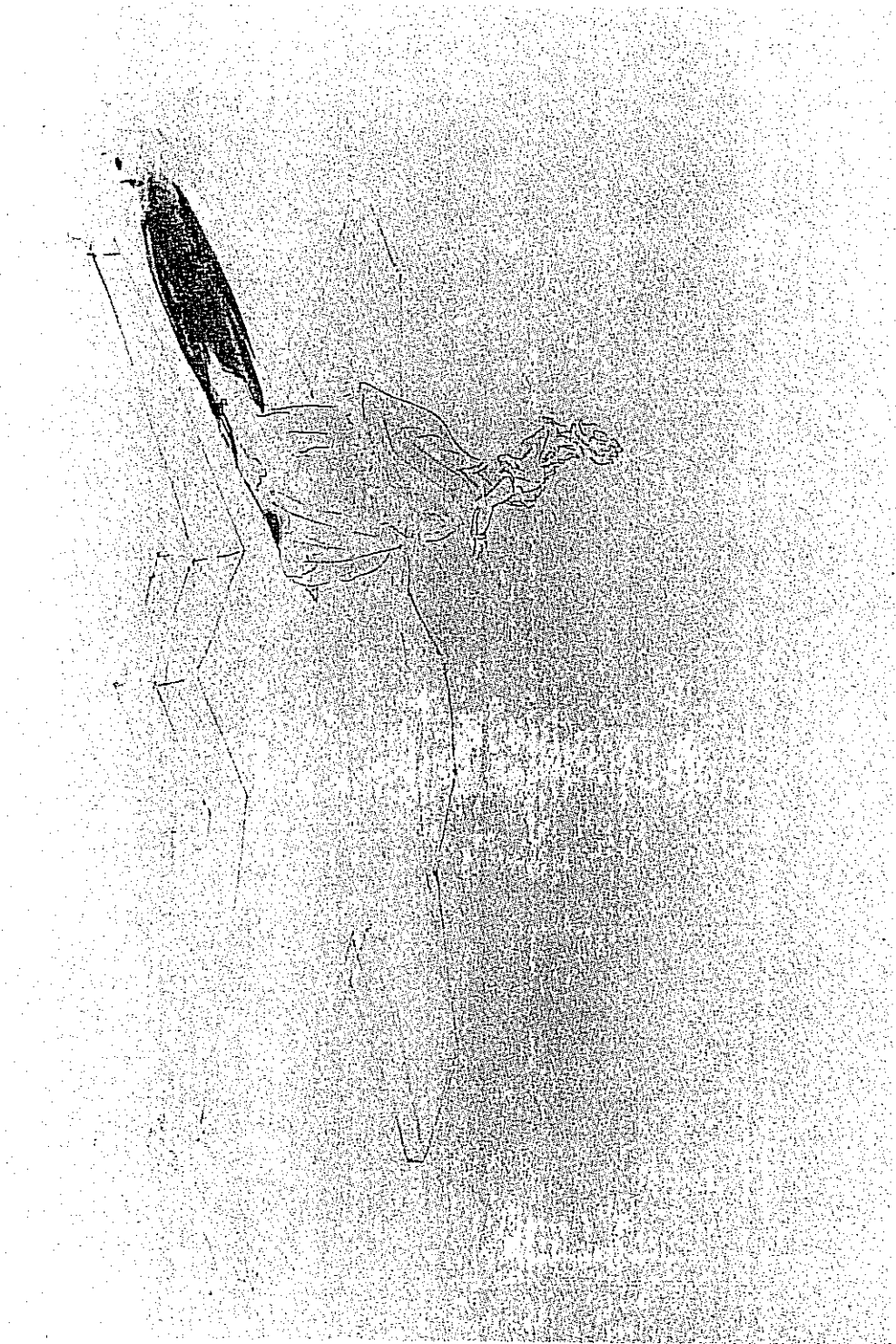
46. *Santa Claus: Diagonal Curtains.* Kiesler Papers.



47. *Garrick*, Act II. Billy Rose Theatre Collection; The New York Public Library at Lincoln Center: Astor, Lenox and Tilden Foundations.



48. *The Mother of Us All*: Basic Unit. Kiesler Papers.



49. *The Mother of Us All*: Act I, Scene v. Kiesler Papers.

